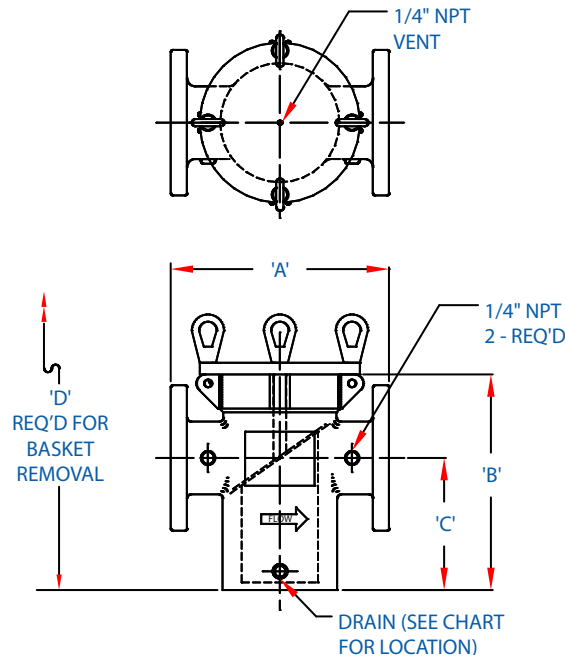
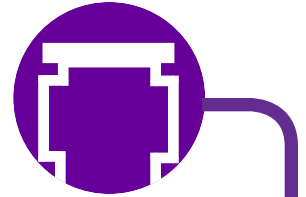
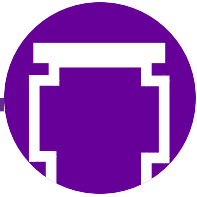
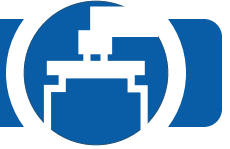


Series 105 Simplex Strainer Cast Iron Swing Bolt O-Ring Closure, Flanged Connection Class 125 ANSI Flat Face Flange Rating



Size Connection	A	B	C	D	Drain Size and Location	Weight	Cv
2"-125# FF 50 mm	11-3/4" 298.5 mm	9-3/4" 247.7 mm	8" 203.2 mm	18-3/4" 476.3 mm	1/4" NPT Bottom	47 lbs. 21.3 kg.	85 GPM 323 LPM
2-1/2"-125# FF 65 mm	13" 330.2 mm	13-7/8" 352.4 mm	8-1/2" 215.9 mm	27" 685.8 mm	1/2" NPT Bottom	71 lbs. 32.2 kg.	125 GPM 475 LPM
3"-125# FF 80 mm	13" 330.2 mm	13-7/8" 352.4 mm	8-1/2" 215.9 mm	27" 685.8 mm	1/2" NPT Bottom	85 lbs. 38.5 kg.	200 GPM 760 LPM
4"-125# FF 100 mm	13-1/2" 342.9 mm	13-7/8" 352.4 mm	8-1/2" 215.9 mm	27" 685.8 mm	1/2" NPT Bottom	97 lbs. 44 kg.	350 GPM 1330 LPM
5"-125# FF 125 mm	15" 381.0 mm	15-1/4" 387.4 mm	9-3/8" 238.1 mm	30" 762.0 mm	1/2" NPT Body	132 lbs. 59.9 kg.	560 GPM 2128 LPM
6"-125# FF 150 mm	17-1/4" 438.2 mm	16-5/8" 422.3 mm	10-1/4" 260.4 mm	32" 812.8 mm	1/2" NPT Body	183 lbs. 83 kg.	810 GPM 3078 LPM
8"-125# FF 200 mm	22" 558.8 mm	20-7/8" 530.2 mm	13-1/4" 336.6 mm	41" 1041.4 mm	3/4" NPT Body	350 lbs. 158.8 kg.	1360 GPM 5168 LPM
10"-125# FF 250 mm	26" 660.4 mm	25-3/4" 654.1 mm	17" 431.8 mm	50" 1270.0 mm	3/4" NPT Body	570 lbs. 258.5 kg.	2085 GPM 7923 LPM
12"-125# FF 300 mm	30" 762.0 mm	29-7/8" 758.8 mm	19-3/4" 501.7 mm	58" 1473.2 mm	3/4" NPT Body	868 lbs. 393.7 kg.	3025 GPM 11495 LPM

Notes: Other drain sizes and vents are available for special applications.
Dimensions subject to change without notice. Apply for certified drawings.

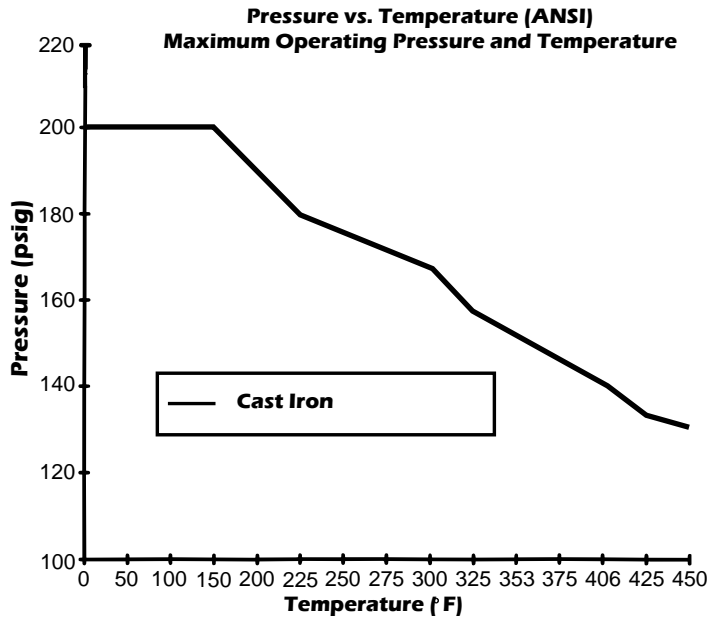


Series 105 Simplex Strainer

Cast Iron

Swing Bolt O-Ring Closure, Flanged Connection

Class 125 ANSI Flat Face Flange Rating



Standard Construction	
Cast Steel	
Body	Class 30 ASTM A126-B
Cover	Class 30 ASTM A126-B
O-ring	Viton
Basket	Available in 1/32", 1/16", or 1/8" perforations and 40 mesh and 80 mesh - 316 Stainless Steel

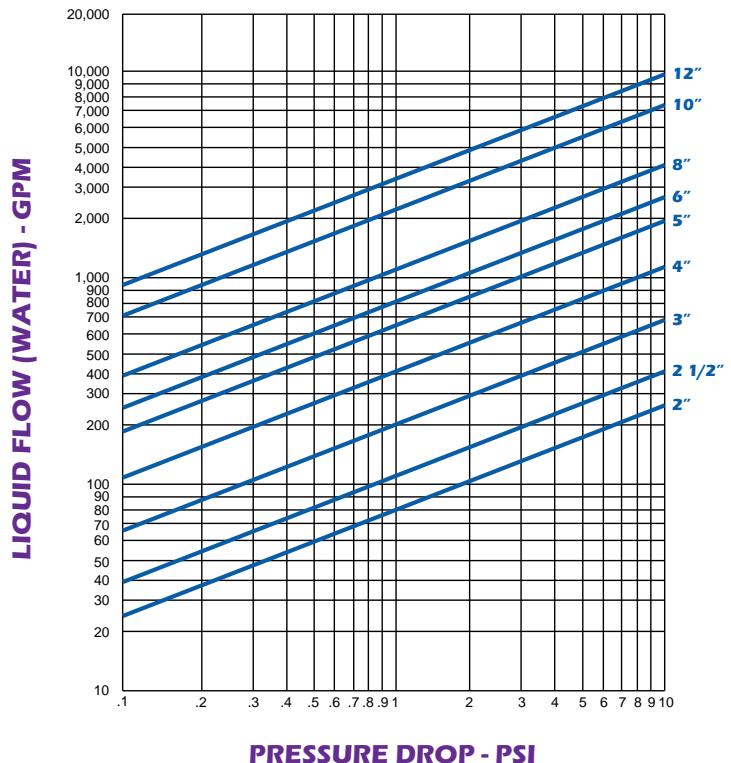
Operating Limits on Seal Gaskets		
Elastomer	°F	°C
Buna-N	257	125
EPMD	302	150
Viton ¹	437	225
Silicone ²	482	250

¹Supplied as standard

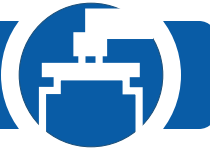
²Do not use for paint applications

Options

- Baskets are available in other materials, perforations, and meshes. Please consult the factory
- Drilling is available, upon request, to meet BS4504 PN10 and PN16 and JIS flange sizes.



"Engineered Products for Demanding Applications, Performance, and Service"

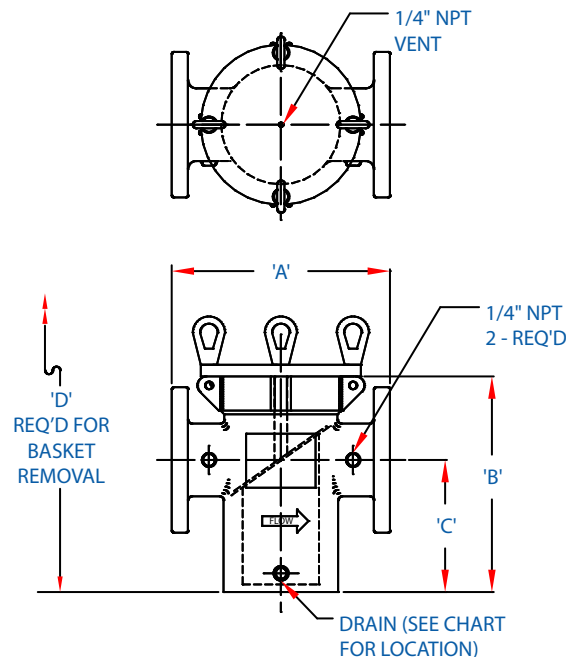
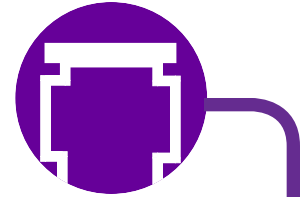


Series 105 Simplex Strainer

Cast Steel and Cast 316 Stainless Steel

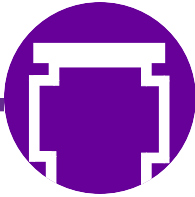
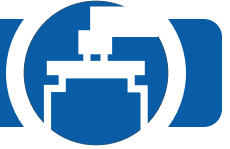
Swing Bolt O-Ring Closure, Flanged Connection

Class 150 ANSI Raised Face Flange Rating



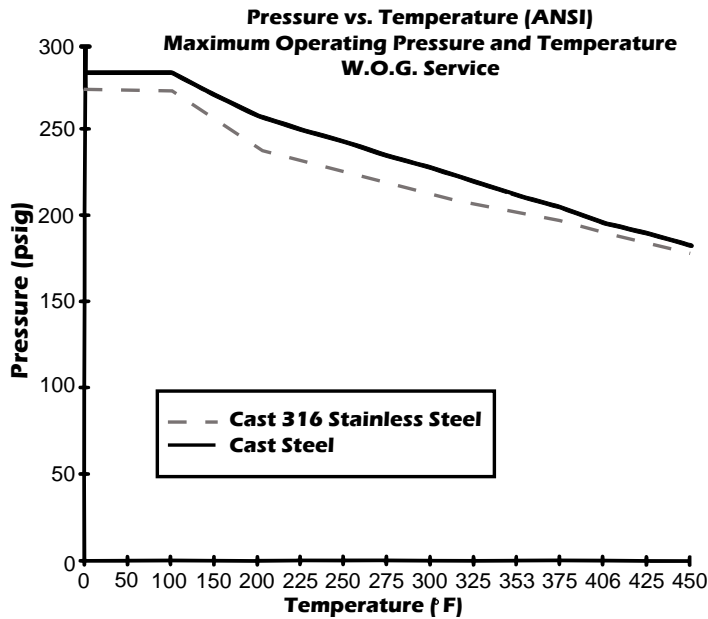
Size	A	B	C	D	Drain Size and Location	Weight	Cv
2"-150# RF 50 mm	11-3/4" 298.5 mm	9-3/4" 247.7 mm	8" 203.2 mm	18-3/4" 476.3 mm	1/4" NPT Bottom	48 lbs. 21.8 kg.	85 GPM 323 LPM
2-1/2"-150# RF 65 mm	13" 330.2 mm	13-7/8" 352.4 mm	8-1/2" 215.9 mm	27" 685.8 mm	1/2" NPT Bottom	75 lbs. 34 kg.	125 GPM 475 LPM
3"-150# RF 80 mm	13" 330.2 mm	13-7/8" 352.4 mm	8-1/2" 215.9 mm	27" 685.8 mm	1/2" NPT Bottom	90 lbs. 40.8 kg.	200 GPM 760 LPM
4"-150# RF 100 mm	13-1/2" 342.9 mm	13-7/8" 352.4 mm	8-1/2" 215.9 mm	27" 685.8 mm	1/2" NPT Bottom	103 lbs. 46.7 kg.	350 GPM 1330 LPM
5"-150# RF 125 mm	15" 381.0 mm	15-1/4" 387.4 mm	9-3/8" 238.1 mm	30" 762.0 mm	1/2" NPT Body	141 lbs. 64 kg.	560 GPM 2128 LPM
6"-150# RF 150 mm	17-1/4" 438.2 mm	16-5/8" 422.3 mm	10-1/4" 260.4 mm	32" 812.8 mm	1/2" NPT Body	194 lbs. 88 kg.	810 GPM 3078 LPM
8"-150# RF 200 mm	22" 558.8 mm	20-7/8" 530.2 mm	13-1/4" 336.6 mm	41" 1041.4 mm	3/4" NPT Body	373 lbs. 169.1 kg.	1360 GPM 5168 LPM
10"-150# RF 250 mm	26" 660.4 mm	25-3/4" 654.1 mm	17" 431.8 mm	50" 1270.0 mm	3/4" NPT Body	608 lbs. 275.8 kg.	2085 GPM 7923 LPM
12"-150# RF 300 mm	30" 762.0 mm	29-7/8" 758.8 mm	19-3/4" 501.7 mm	58" 1473.2 mm	3/4" NPT Body	926 lbs. 420 kg.	3025 GPM 11495 LPM

Notes: Other drain sizes and vents are available for special applications.
Dimensions subject to change without notice. Apply for certified drawings.



Series 105 Simplex Strainer

Cast Steel and Cast 316 Stainless Steel
Swing Bolt O-Ring Closure, Flanged Connection
Class 150 ANSI Raised Face Flange Rating



Standard Construction		
	Cast Steel	Cast 316 Stainless Steel
Body	A216 Grade WCB	A351 Grade CF8M
Cover	A216 Grade WCB	A351 Grade CF8M
O-ring	Viton	Viton
Basket	Available in 1/32", 1/16", or 1/8" perforations and 40 mesh and 80 mesh - 316 Stainless Steel	

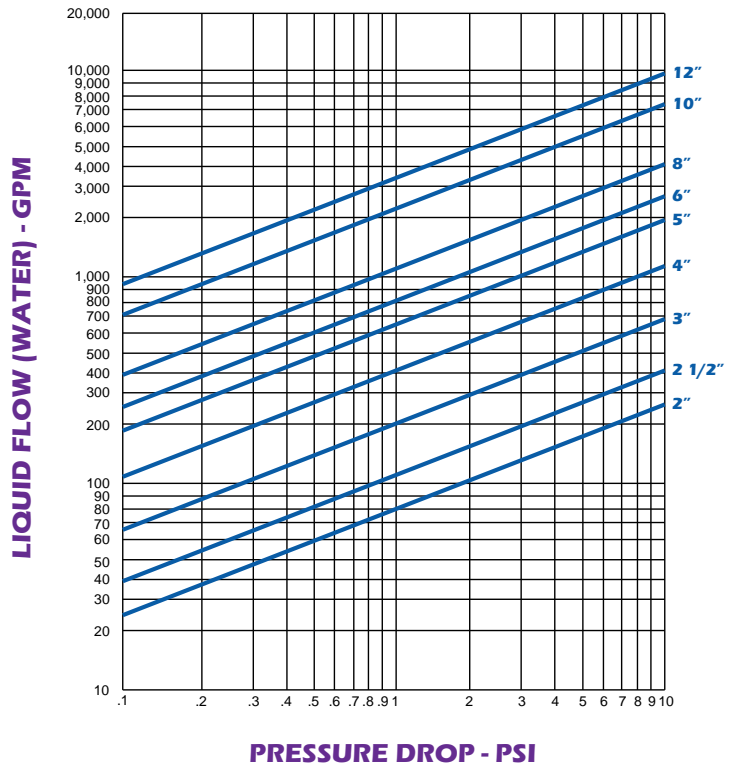
Operating Limits on Seal Gaskets		
Elastomer	°F	°C
Buna-N	257	125
EPDM	302	150
Viton ¹	437	225
Silicone ²	482	250

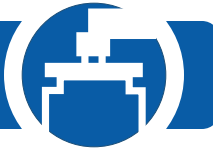
¹Supplied as standard

²Do not use for paint applications

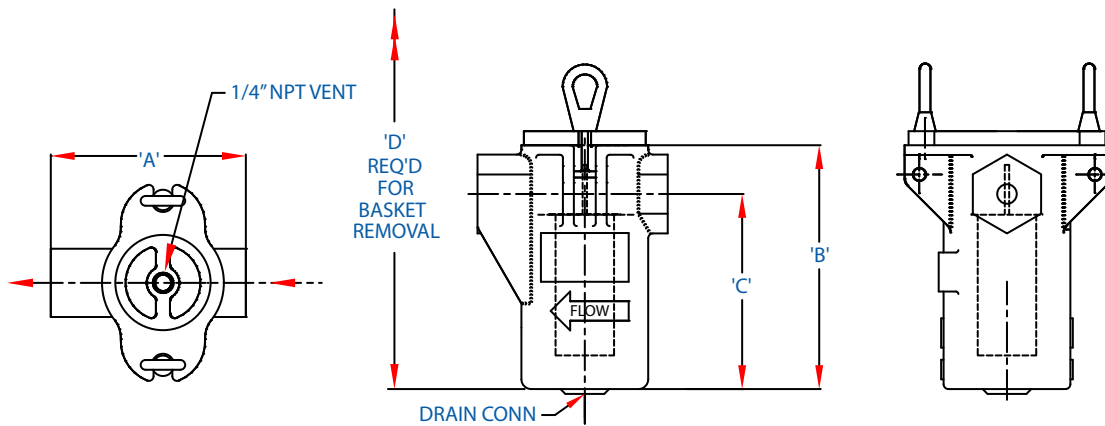
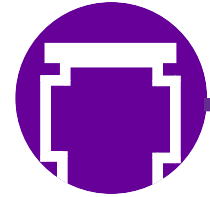
Options

- Baskets are available in other materials, perforations, and meshes. Please consult the factory
- Drilling is available, upon request, to meet BS4504 PN10 and PN16 and JIS flange sizes.





Series 115 NPT Basket Strainer Cast Iron, Cast Steel, and Cast 316 Stainless Steel Swing Bolt O-Ring Closure



Size Connection	A	B	C	D	Drain NPT	Weight	Cv
3/4" NPT 20 mm	5" 127.0 mm	6-1/4" 158.8 mm	5" 127.0 mm	6" 152.4 mm	1/4" NPT	11 lbs. 5 kg.	15 GPM 57 LPM
1" NPT 25 mm	5" 127.0 mm	6-1/4" 158.8 mm	5" 127.0 mm	6" 152.4 mm	1/4" NPT	11 lbs. 5 kg.	25 GPM 95 LPM
1-1/4" NPT 32 mm	7-5/8" 193.7 mm	9-3/4" 247.7 mm	8" 203.2 mm	9" 228.6 mm	1/4" NPT	33 lbs. 15 kg.	32 GPM 121.6 LPM
1-1/2" NPT 38 mm	7-5/8" 193.7 mm	9-3/4" 247.7 mm	8" 203.2 mm	9" 228.6 mm	1/4" NPT	33 lbs. 15 kg.	53 GPM 201.4 LPM
2" NPT 50 mm	7-5/8" 193.7 mm	9-3/4" 247.7 mm	8" 203.2 mm	9" 228.6 mm	1/4" NPT	33 lbs. 15 kg.	85 GPM 323 LPM

Notes: Other drain sizes and vents are available for special applications.
Dimensions subject to change without notice. Apply for certified drawings.

Standard Construction			
	Cast Iron	Cast Steel	Cast 316 Stainless Steel
Body	Class 30 ASTM A126B	A216 Grade WCB	A351 Grade CF8M
Cover	Class 30 ASTM A126B	A216 Grade WCB	A351 Grade CF8M
O-ring	Viton	Viton	Viton
Basket	Available in 1/32", 1/16", or 1/8" perforations and 40 mesh and 80 mesh - 316 Stainless Steel		

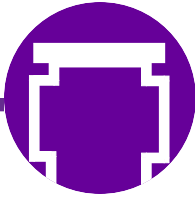
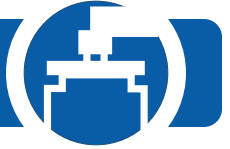
Operating Limits on Seal Gaskets		
Elastomer	°F	°C
Buna-N	257	125
EPDM	302	150
Viton ¹	437	225
Silicone ²	482	250

¹Supplied as standard

²Do not use for paint applications

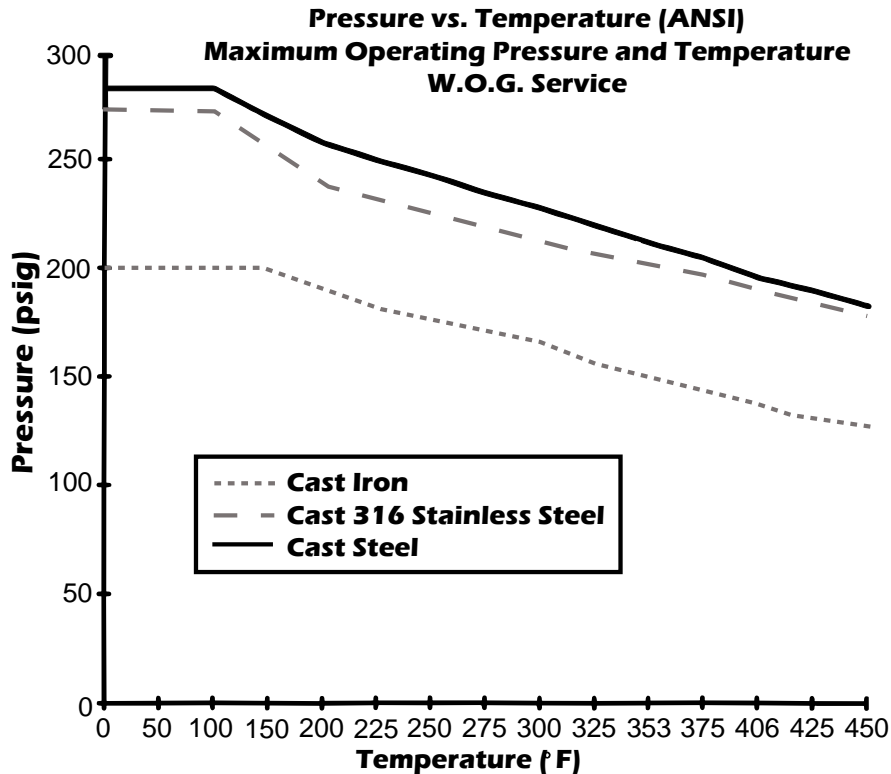
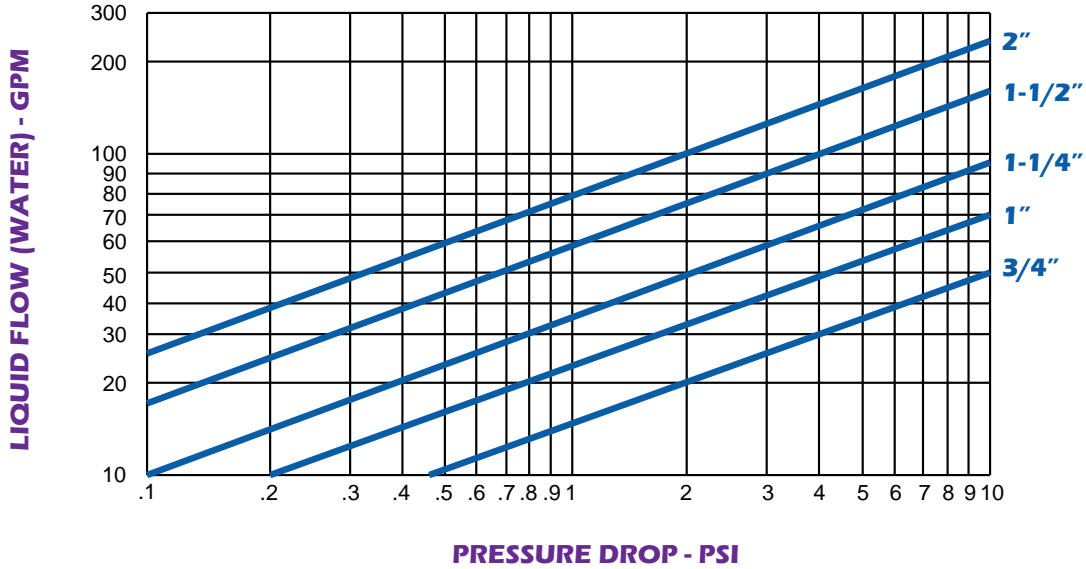
Options

- Baskets are available in other materials, perforations, and meshes. Please consult the factory
- British thread sizes (BSP) available upon request.

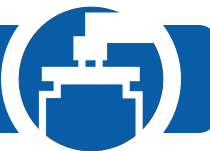


Series 115 NPT Basket Strainer

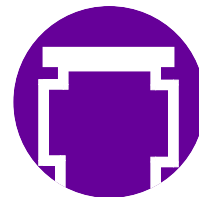
Cast Iron, Cast Steel, and Cast 316 Stainless Steel
 Swing Bolt O-Ring Closure



"Engineered Products for Demanding Applications, Performance, and Service"



Series 107 & 108 Simplex Strainers



Cast simplex strainers are used in applications where the flow can be interrupted for basket cleaning. These strainers are an excellent choice for protection of pumps, meters, valves, traps, spray nozzles, and many more applications.

High Quality Construction

- Flanges designed and built to ANSI, British, or JIS specifications
- Material specifications in accordance to ASME and ASTM
- Each strainer is proof pressure tested per ASME standards before shipment

Material of Construction for a Variety of Applications

- Available in cast steel, and cast stainless steel to meet the demands of a wider range of applications
- ASME Section VIII Division I "U" stamp available for cast steel and cast stainless steel

107 Simplex Strainer with Hinged Cover



108 Simplex Strainer with Davit Arm

Low Maintenance Costs

- Quick opening swing bolt reduces the maintenance time
- Few replacement parts are required

Low Installation Costs

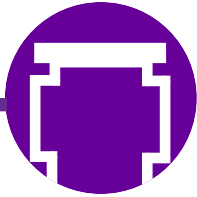
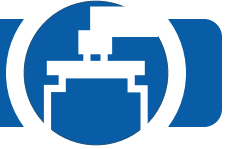
- In-line connections

Low Capital Investments

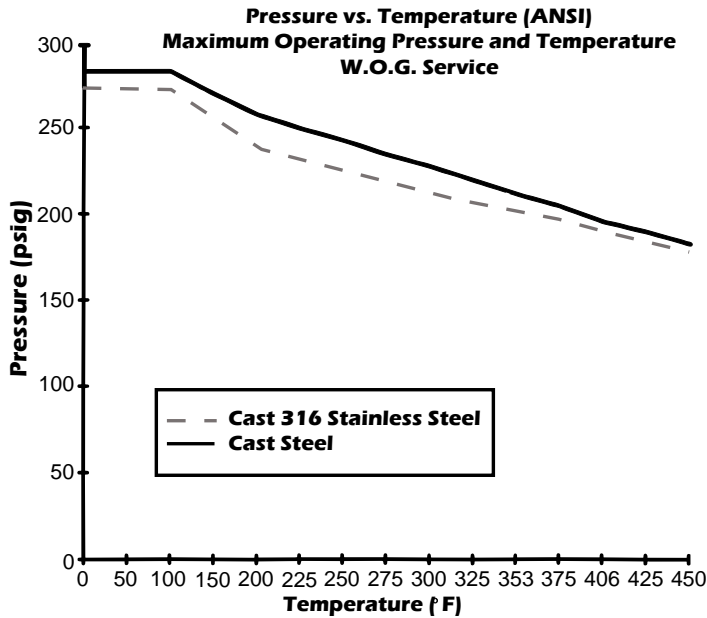
- Competitively priced
- Heavy-duty, large capacity baskets are designed for long life

Large Capacity Baskets

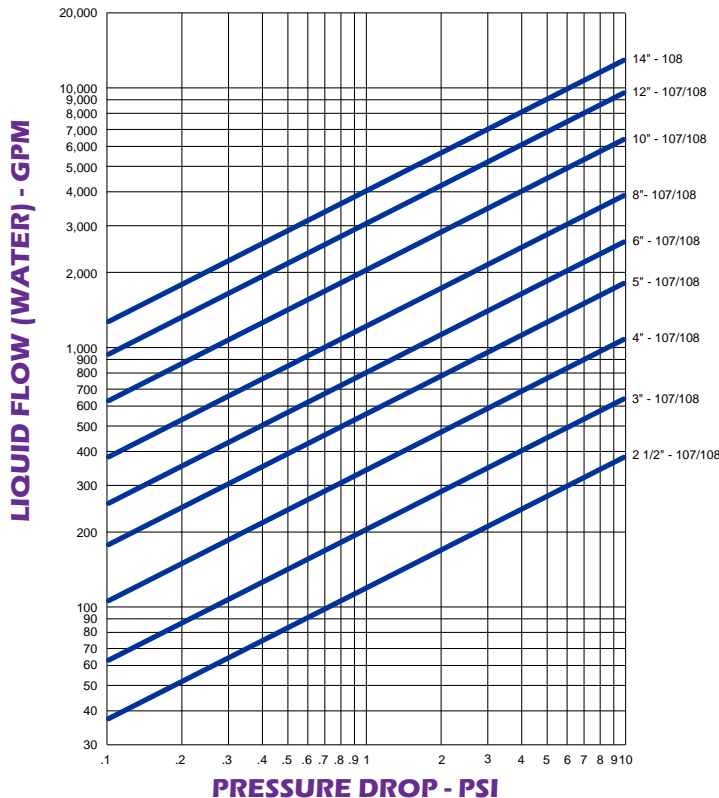
- Provides for a low pressure drop and a larger basket open area



Series 107 & 108 Simplex Strainers



Standard Construction		
	Cast Steel	Cast 316 Stainless Steel
Body	A216 Grade WCB	A351 Grade CF8M
Cover	A216 Grade WCB	Cast Steel with 316 Overlay
O-ring	Viton	Viton
Basket	Available in 1/32", 1/16", or 1/8" perforations and 40 mesh and 80 mesh - 316 Stainless Steel	



Operating Limits on Seal Gaskets		
Elastomer	°F	°C
Buna-N	257	125
EPDM	302	150
Viton ¹	437	225
Silicone ²	482	250

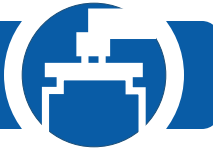
¹Supplied as standard

²Do not use for paint applications

Options

- Baskets are available in other materials, perforations, and meshes. Please consult the factory
- Special flanges are available, upon request, to meet BS4504 PN10 and PN16 and JIS flange sizes

"Engineered Products for Demanding Applications, Performance, and Service"



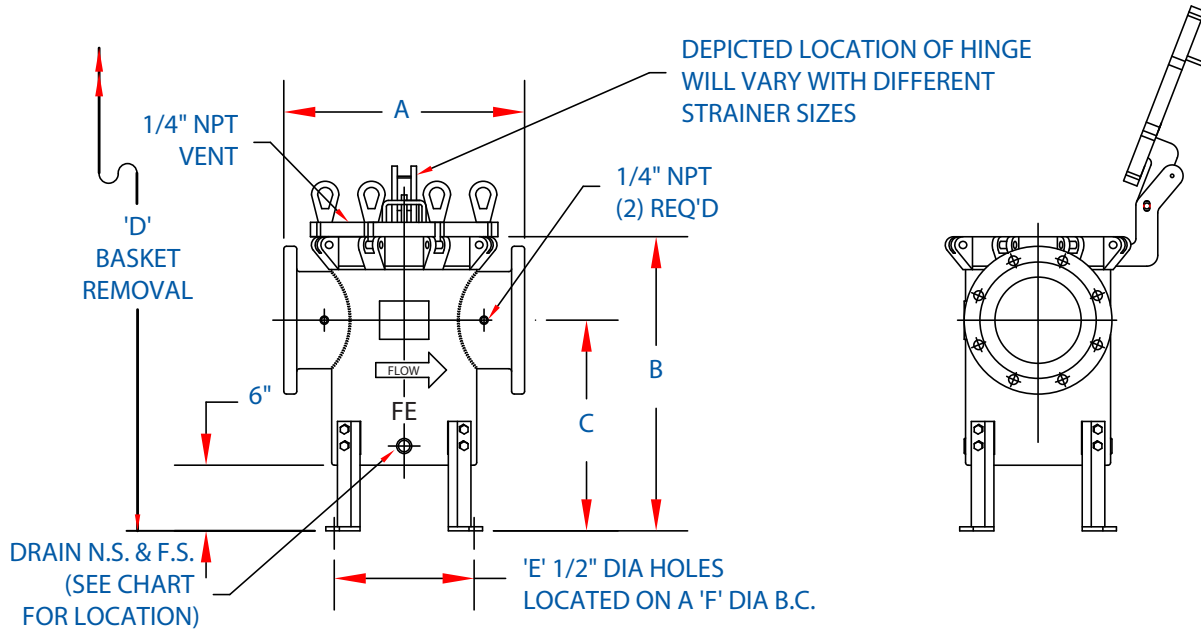
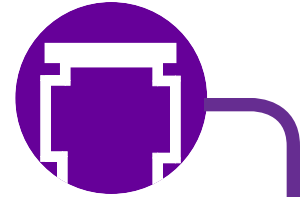
Series 107 Simplex Strainers

Cast Steel and Cast 316 Stainless Steel

Swing Bolt O-Ring Closure, Flanged Connection

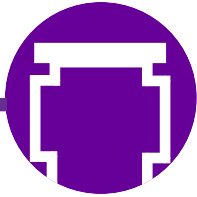
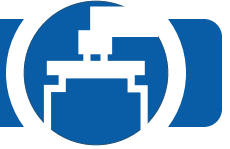
Class 150 ANSI Raised Face Flange Rating

Hinged Cover Lift



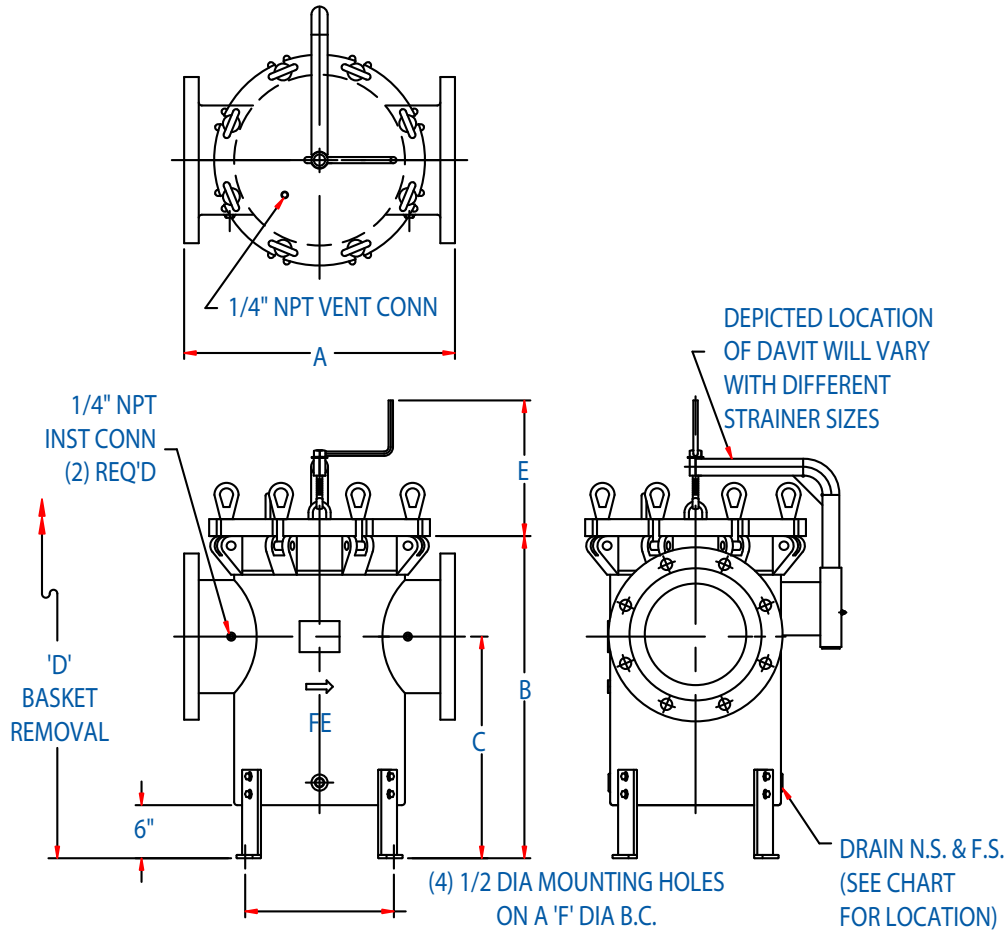
Size Connection	A	B	C	D	Number of Holes E	F	Drain Size ¹ and Location	Weight	Cv
2 1/2"-150# RF 65 mm	13" 330.2 mm	19 7/8" 504.8 mm	14 1/2" 368.3 mm	33" 838.2 mm	3	10 7/8" 276.2 mm	1/2" NPT Bottom	90 lbs. 40.8 kg.	125 GPM 475 LPM
3"-150# RF 80 mm	13" 330.2 mm	19 7/8" 504.8 mm	14 1/2" 368.3 mm	33" 838.2 mm	3	10 7/8" 276.2 mm	1/2" NPT Bottom	100 lbs. 45.3 kg.	200 GPM 760 LPM
4"-150# RF 100 mm	13 1/2" 342.9 mm	19 7/8" 504.8 mm	14 1/2" 368.3 mm	33" 838.2 mm	3	10 7/8" 276.2 mm	1/2" NPT Bottom	120 lbs. 54.3 kg.	350 GPM 1330 LPM
5"-150# RF 125 mm	15" 381.0 mm	21 1/4" 539.6 mm	15 3/8" 390.5 mm	36" 914.4 mm	4	11 7/8" 301.6 mm	1/2" NPT Body	158 lbs. 71.6 kg.	560 GPM 2128 LPM
6"-150# RF 150 mm	17 1/4" 438.2 mm	22 5/8" 574.7 mm	16 1/4" 412.8 mm	38" 965.2 mm	4	13 5/8" 346.1 mm	1/2" NPT Body	225 lbs. 102.1 kg.	810 GPM 3078 LPM
8"-150# RF 200 mm	22" 558.8 mm	26 7/8" 682.6 mm	19 1/4" 489.0 mm	47" 1193.8 mm	4	16 1/2" 419.1 mm	3/4" NPT Body	400 lbs. 181.4 kg.	1360 GPM 5168 LPM
10"-150# RF 250 mm	26" 660.4 mm	31 3/4" 806.5 mm	23" 584.2 mm	56" 1422.4 mm	4	19 3/8" 492.1 mm	3/4" NPT Body	635 lbs. 288 kg.	2085 GPM 7923 LPM
12"-150# RF 300 mm	30" 762.0 mm	35 7/8" 911.2 mm	25 3/4" 654.1 mm	64" 1625.6 mm	4	22 1/2" 571.5 mm	3/4" NPT Body	965 lbs. 437.7 kg.	3025 GPM 11495 LPM

Notes: ¹Other drain sizes and vents are available for special applications.
Dimensions subject to change without notice. Apply for certified drawings.



Series 108 Simplex Strainers

Cast Steel and Cast 316 Stainless Steel
Swing Bolt O-Ring Closure, Flanged Connection
Class 150 ANSI Raised Face Flange Rating
Davit Cover Lift



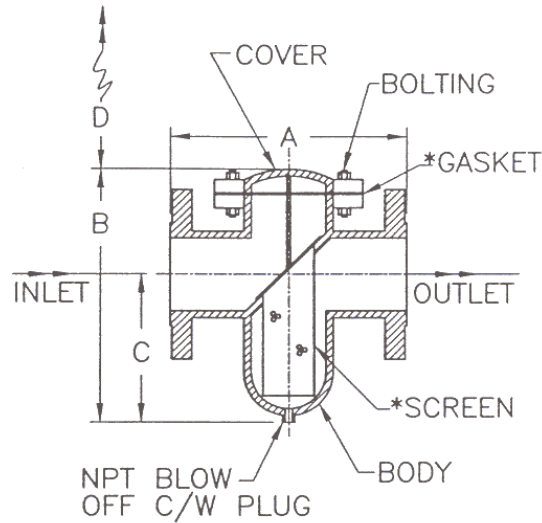
Size	A	B	C	D	E	F	DRAIN ¹	WT APPROX	Cv
6"-150 RF 150 mm	17 1/4" 438.2 mm	22 5/8" 574.7 mm	16 1/4" 412.8 mm	38" 965.2 mm	11 1/8" 282.6 mm	13 5/8" 346.1 mm	1/2" NPT	225 lbs 102.1 kg	810 GPM 3078 LPM
8"-150 RF 200 mm	22" 558.8 mm	26 7/8" 682.6 mm	19 1/4" 489.0 mm	47" 1193.8 mm	11 3/8" 288.9 mm	16 1/2" 419.1 mm	3/4" NPT	395 lbs 179.2 kg	1360 GPM 5168 LPM
10"-150 RF 250 mm	26" 660.4 mm	31 3/4" 806.5 mm	23" 584.2 mm	56" 1422.4 mm	14 5/8" 371.5 mm	19 3/8" 492.1 mm	3/4" NPT	640 lbs 290.3 kg	2085 GPM 7923 LPM
12"-150 RF 300 mm	30" 762.0 mm	35 7/8" 911.2 mm	25 3/4" 654.1 mm	64" 1125.6 mm	14 7/8" 377.9	22 1/2" 571.5 mm	3/4" NPT	975 lbs 442.3 kg	3025 GPM 11495 LPM
14"-150 RF 356 mm	32" 812.8 mm	42" 1066.8 mm	27" 685.8 mm	73" 1854.2 mm	15" 381.0	22 3/4" 577.9 mm	1 1/2" NPT	1250 lbs 567.0 kg	4025 GPM 15236 LPM

Notes: ¹Other drain sizes and vents are available for special applications.
 Dimensions subject to change without notice. Apply for certified drawings.

"Engineered Products for Demanding Applications, Performance, and Service"



SERIES 124 FLAT FACE CAST IRON BASKET STRAINER 125 LB. ANSI FLANGE RATING, BOLTED COVER



*Denotes Recommended Spare Parts

SIZE	A	B	C	D BASKET REMOVAL	BLOW OFF	WEIGHT
2" 50 mm	8-1/8" 206.4 mm	8-3/8" 212.7 mm	5" 127.0 mm	5-3/8" 136.5 mm	3/4" NPT 20 mm	26 lbs. 11.8 kg.
2-1/2" 65 mm	8-3/4" 222.3 mm	9-5/8" 244.5 mm	5-5/16" 134.9 mm	6-5/16" 160.3 mm	3/4" NPT 20 mm	35 lbs. 15.9 kg.
3" 80 mm	9-7/8" 250.8 mm	11-1/4" 285.8 mm	6-1/2" 165.1 mm	8" 203.2 mm	3/4" NPT 20 mm	47 lbs. 21.3 kg.
4" 100 mm	11-1/2" 292.1 mm	13-1/2" 342.9 mm	8" 203.2 mm	9-5/16" 236.5 mm	1" NPT 25 mm	78 lbs. 35.4 kg.
5" 125 mm	13-1/8" 333.4 mm	14-5/8" 371.5 mm	8" 203.2 mm	10-1/4" 260.4 mm	1" NPT 25 mm	100 lbs. 45.4 kg.
6" 150 mm	14-7/8" 377.8 mm	15-5/8" 396.9 mm	8-5/8" 219.1 mm	11-1/8" 282.6 mm	1" NPT 25 mm	137 lbs. 62.1 kg.
8" 200 mm	18-11/16" 474.7 mm	21" 533.4 mm	11-3/4" 298.5 mm	15-9/16" 395.3 mm	1" NPT 25 mm	300 lbs. 136.1 kg.
10" 250 mm	20-1/8" 511.2 mm	24-1/2" 622.3 mm	13-3/4" 349.3 mm	18" 457.2 mm	1" NPT 25 mm	430 lbs. 195.0 kg.
12" 300 mm	26-1/4" 666.8 mm	29-3/4" 755.7 mm	16-3/8" 415.9 mm	23-1/4" 590.6 mm	1" NPT 25 mm	738 lbs. 334.8 kg.

Dimensions subject to change without notice, apply for certified drawings.

STANDARD CONSTRUCTION

	CAST IRON
Body and Cover	ASTM A126 Class B
Gasket	Non-Asbestos
Screen	Stainless Steel

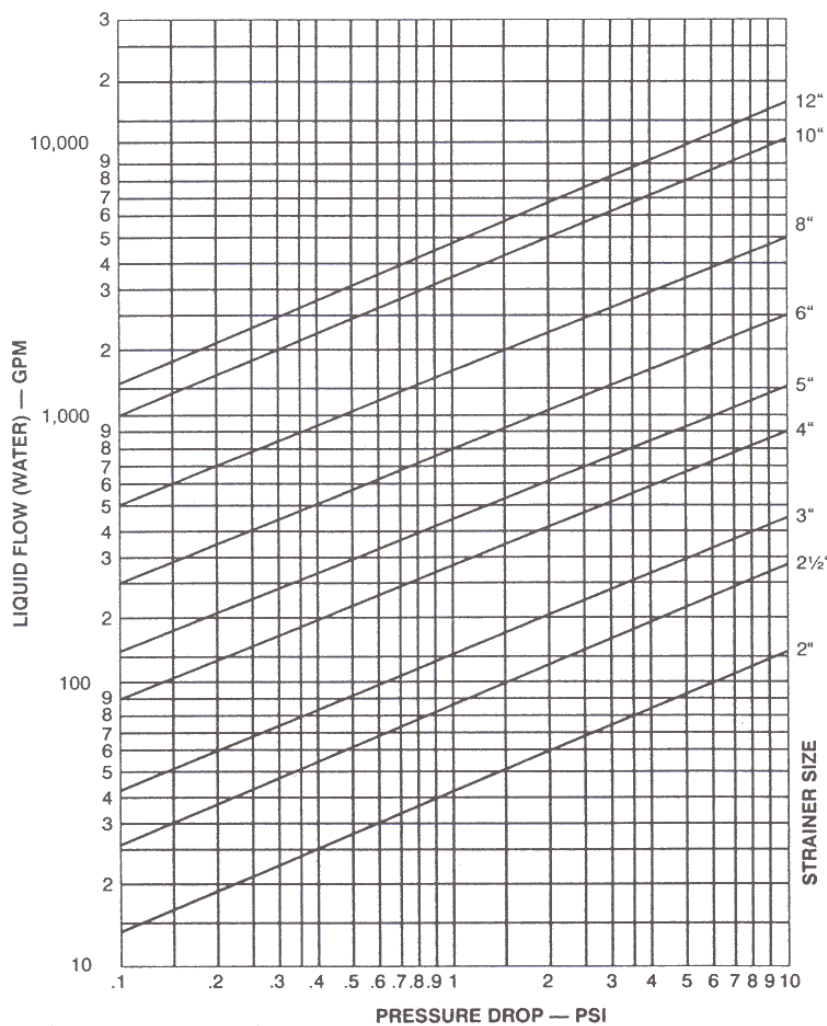
MAXIMUM OPERATING PRESSURES AND TEMPERATURES

	CAST IRON
Steam	2" through 12" - 125 psi @ 350°F
W.O.G.	2" through 12" - 200 psi @ 150°F

STANDARD SCREENS

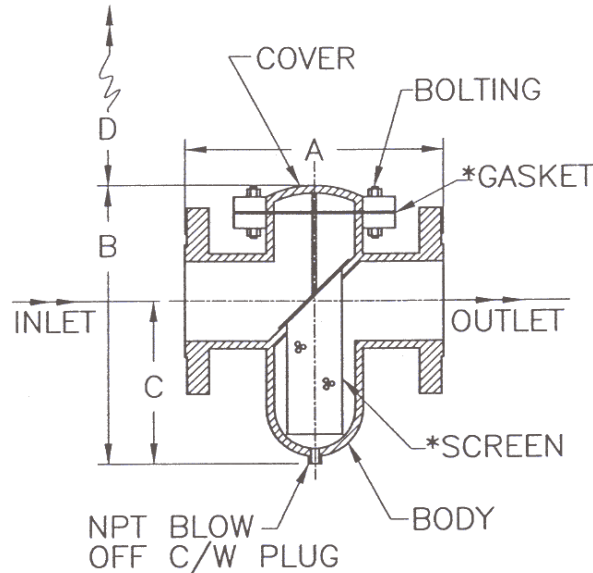
SIZE	SCREEN OPENING
2" through 3"	0.045" perforations
4" through 12"	0.125" perforations

Other screen openings are available, please consult the factory or your local sales representative.





SERIES 124 RAISED FACE CAST STEEL & CAST 316 STAINLESS BASKET STRAINERS 150 LB. ANSI FLANGE RATING, BOLTED COVER



*Denotes Recommended Spare Parts

SIZE	A	B	C	D BASKET REMOVAL	BLOW OFF	WEIGHT
2" 50 mm	8-1/8" 206.4 mm	8-3/8" 212.7 mm	5" 127.0 mm	5-3/8" 136.5 mm	1" NPT 25 mm	26 lbs. 11.8 kg.
2-1/2" 65 mm	8-3/4" 222.3 mm	9-5/8" 244.5 mm	5-5/16" 134.9 mm	6-5/16" 160.3 mm	1" NPT 25 mm	35 lbs. 15.9 kg.
3" 80 mm	9-7/8" 250.8 mm	11-1/4" 285.8 mm	6-1/2" 165.1 mm	8" 203.2 mm	1" NPT 25 mm	47 lbs. 21.3 kg.
4" 100 mm	11-1/2" 292.1 mm	13-1/2" 342.9 mm	8" 203.2 mm	9-5/16" 236.5 mm	1" NPT 25 mm	78 lbs. 35.4 kg.
5" 125 mm	13-1/8" 333.4 mm	14-5/8" 371.5 mm	8" 203.2 mm	10-1/4" 260.4 mm	1" NPT 25 mm	100 lbs. 45.4 kg.
6" 150 mm	14-7/8" 377.8 mm	15-5/8" 396.9 mm	8-5/8" 219.1 mm	11-1/8" 282.6 mm	1" NPT 25 mm	137 lbs. 62.1 kg.

**Dimensions subject to change without notice, apply for certified drawings.
Larger sizes are available, please consult the factory or your local sales representative.**

STANDARD CONSTRUCTION

	CAST STEEL	CAST 316 STAINLESS STEEL
Body and Cover	ASTM A216 Grade WCB	ASTM A351 Grade CF8M
Gasket	Non-Asbestos	Teflon
Screen	Stainless Steel	Stainless Steel

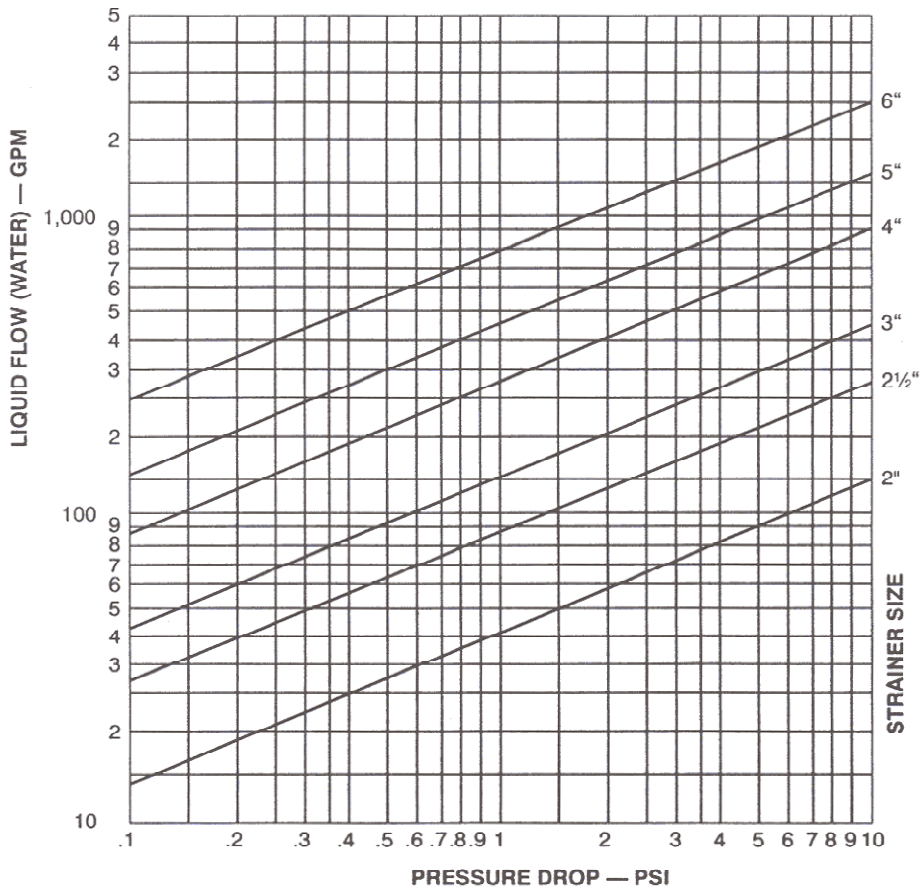
MAXIMUM OPERATING PRESSURES AND TEMPERATURES W.O.G. SERVICE ONLY

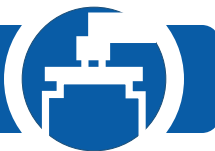
CAST STEEL	CAST 316 STAINLESS STEEL
2" through 16" - 285 psi @ 100°F	2" through 16" - 235 psi @ 100°F

STANDARD SCREENS

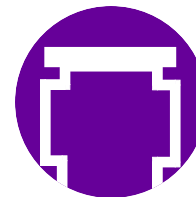
SIZE	SCREEN OPENING
2" through 3"	0.045" perforations
4" through 16"	0.125" perforations

Other screen openings are available, please consult the factory or your local sales representative.





Series 124 Fabricated Simplex Basket Strainer



Strainers are used in nearly every industry to protect equipment (valves, pumps, meters, and spray nozzles) and to ensure product purity (gas, petroleum, paper, and food processing). This type of strainer is an inexpensive design that is used in applications where the flow can be interrupted for basket cleaning. This type of strainer is installed in a pipeline to remove unwanted solids from fluids or gases. Straining is accomplished by directing the fluid through a basket where debris is trapped on the inside of a screen element and clean fluid flows through the outlet.

Fluid Engineering simplex basket strainers are available in standard or custom designs. Fabricated designs are not limited to existing patterns or foundry capabilities and are especially superior for corrosive, hazardous, or low specific gravity fluid applications. The Series 124 can be custom designed in many configurations and materials for unusual conditions or critical applications.



Standard Design:

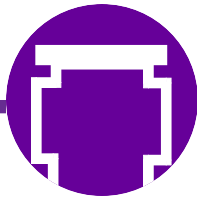
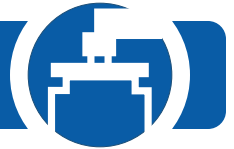
- Fabricated carbon steel body with bolted style cover
- Available in 1/16" or 1/8" perforations and 40 or 80 mesh - 316 stainless steel
- All vessels are manufactured and tested generally in accordance with ASME Code, Section VIII, Division 1, using welders certified to Section IX.
- All strainers are hydrostatically tested to 1.3 times design pressure.

Standard Design Features:

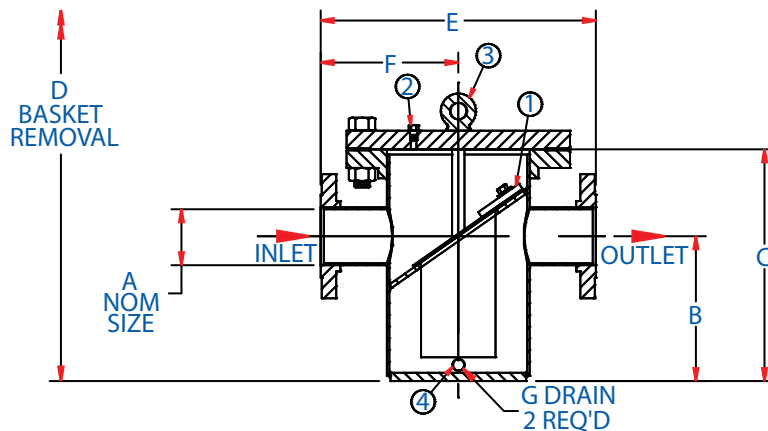
- In line connections
- Compact, light weight fabricated vessels
- Angle basket design with a low pressure drop
- Large capacity basket
- Heavy duty basket design for a long life

Options Available:

- Basket materials of brass, monel, and others
- Mesh lined baskets - 10 x 10 to 500 x 500 mesh
- Numerous materials of construction such as stainless steel, copper nickel, monel, aluminum bronze, and others for corrosive environment
- ASME Section VIII, Code Stamp supplied with complete pressure vessel material traceability
- Vessel design for high pressure and temperature
- Inlet / outlet connections at right angles or offset configuration reduces piping cost.
- Pressure gauge taps - convenient indication of dirty baskets
- Cover lift assembly (davit) facilitates basket removal.
- Special internal and external coatings



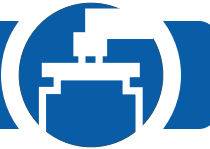
Series 124 Fabricated Simplex Basket Strainer 150 Psig Design



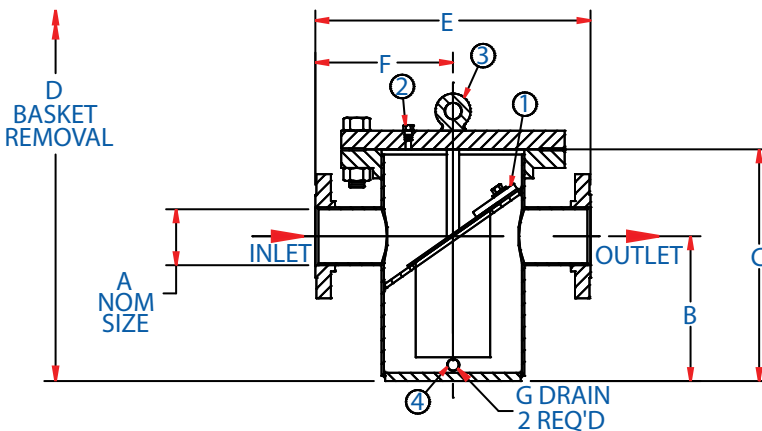
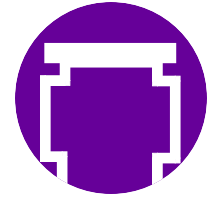
1. Basket hold down is available on 10" and larger sizes only.
2. Vent is available on 6" and larger sizes only.
3. Closure, lifting eye is available on 6" and larger sizes only.
4. Drain plug is located on the side for 6" and larger, otherwise it is on the bottom.

MODEL NO.	DESIGN PRESSURE	SIZE						DRAIN	APPROX WEIGHT LBS.			
		A	B	C	D	E	F		G	DRY	WET	COVER
010-114	150 Psig @ 150°F	1" NPT	6-5/8"	10-1/4"	17"	7-1/8"	3-9/16"	1/2" NPT	54	59	17	1
015-114	150 Psig @ 150°F	1-1/2" NPT	6-5/8"	10-1/4"	17"	7-1/4"	3-5/8"	1/2" NPT	55	60	17	1
020-114	150 Psig @ 150°F	2" NPT	6-5/8"	10-1/4"	17"	7-1/2"	3-3/4"	1/2" NPT	57	63	17	1
025-114	150 Psig @ 150°F	2-1/2" NPT	8-3/4"	14"	27"	12-1/4"	6-1/8"	1/2" NPT	113	136	45	2
030-114	150 Psig @ 150°F	3" NPT	8-3/4"	14"	27"	12-5/8"	6-5/16"	1/2" NPT	115	140	45	2
040-114	150 Psig @ 150°F	4" NPT	8-3/4"	14"	27"	12-7/8"	6-7/16"	1/2" NPT	117	143	45	2
010-124	150 Psig @ 150°F	1-150# RF	6-5/8"	10-1/4"	17"	14-5/8"	7-5/16"	1/2" NPT	85	91	17	1
015-124	150 Psig @ 150°F	1-1/2" -150# RF	6-5/8"	10-1/4"	17"	14-5/8"	7-5/16"	1/2" NPT	87	93	17	1
020-124	150 Psig @ 150°F	2" -150# RF	6-5/8"	10-1/4"	17"	14-5/8"	7-5/16"	1/2" NPT	91	98	17	1
025-124	150 Psig @ 150°F	2-1/2" -150# RF	8-3/4"	14"	27"	15-5/8"	7-13/16"	1/2" NPT	166	195	45	2
030-124	150 Psig @ 150°F	3" -150# RF	8-3/4"	14"	27"	16-5/8"	8-5/16"	1/2" NPT	169	198	45	2
040-124	150 Psig @ 150°F	4" -150# RF	8-3/4"	14"	27"	16-5/8"	8-5/16"	1/2" NPT	176	206	45	2
060-124	150 Psig @ 150°F	6" -150# RF	10-1/2"	16-3/4"	31"	21"	10-1/2"	1" NPT	255	315	70	3
080-124	150 Psig @ 150°F	8" -150# RF	13-1/4"	20-3/4"	39"	24"	12"	1" NPT	380	490	105	5
100-124	150 Psig @ 150°F	10" -150# RF	17-1/4"	26"	47-1/2"	28"	14"	1" NPT	605	825	175	7
120-124	150 Psig @ 150°F	12" -150# RF	19-3/4"	30"	55-1/2"	30"	15"	1-1/2" NPT	795	1110	215	9
140-124	150 Psig @ 150°F	14" -150# RF	21"	33"	59"	32"	16"	1-1/2" NPT	1030	1455	275	11
160-124	150 Psig @ 150°F	16" -150# RF	23"	35-1/4"	65"	34"	17"	1-1/2" NPT	1280	1840	375	13
180-124	150 Psig @ 150°F	18" -150# RF	26"	39-5/8"	73"	36"	18"	2" NPT	1565	2315	425	16
200-124	150 Psig @ 150°F	20" -150# RF	30"	44-7/8"	84"	42"	21"	2" NPT	2345	3610	600	20
240-124	150 Psig @ 150°F	24" -150# RF	34-1/2"	49-5/8"	97"	50"	25"	2" NPT	3150	5175	980	28

Note: Dimensions subject to change without notice, apply for certified drawings.
 Custom designs are available, please consult the FE Sales Department or your local sales representative.



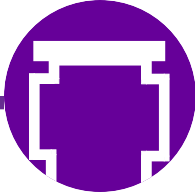
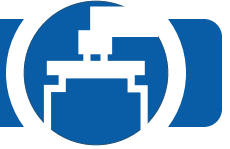
Series 124 Fabricated Simplex Basket Strainer 300 Psig Design



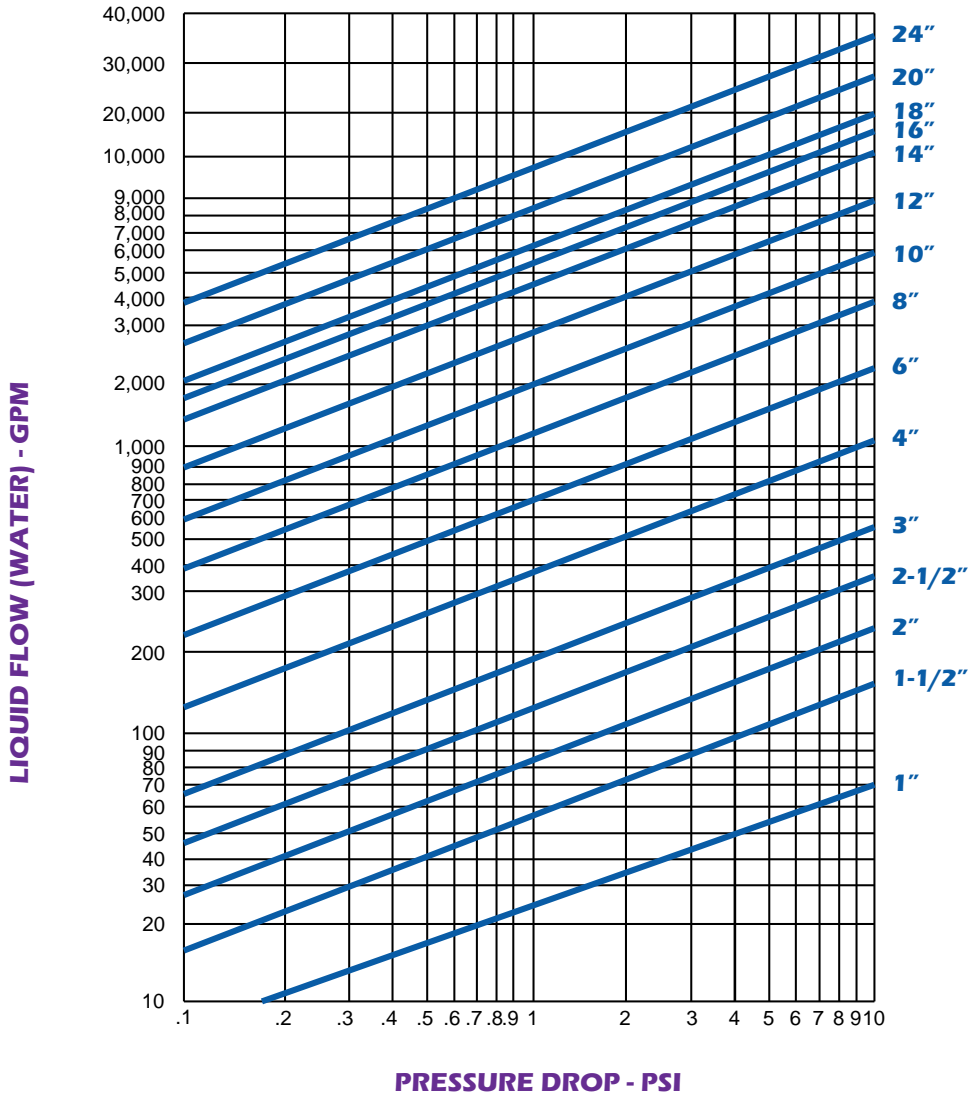
1. Basket hold down is available on 10" and larger sizes only.
2. Vent is available on 6" and larger sizes only.
3. Closure, lifting eye is available on 6" and larger sizes only.
4. Drain plug is located on the side for 6" and larger, otherwise it is on the bottom.

MODEL NO.	DESIGN PRESSURE	SIZE						DRAIN	APPROX WEIGHT LBS.			
		A	B	C	D	E	F		G	DRY	WET	COVER
010-114	300 Psig @ 150°F	1" NPT	6-5/8"	11"	18"	7-1/8"	3-9/16"	1/2" NPT	69	75	27	1
015-114	300 Psig @ 150°F	1-1/2" NPT	6-5/8"	11"	18"	7-1/4"	3-5/8"	1/2" NPT	71	77	27	1
020-114	300 Psig @ 150°F	2" NPT	6-5/8"	11"	18"	7-1/2"	3-3/4"	1/2" NPT	73	79	27	1
025-114	300 Psig @ 150°F	2-1/2" NPT	8-3/4"	15"	28"	12-1/4"	6-1/8"	1/2" NPT	208	231	81	2
030-114	300 Psig @ 150°F	3" NPT	8-3/4"	15"	28"	12-5/8"	6-5/16"	1/2" NPT	214	239	81	2
040-114	300 Psig @ 150°F	4" NPT	8-3/4"	15"	28"	12-7/8"	6-7/16"	1/2" NPT	220	246	81	2
010-124	300 Psig @ 150°F	1" -300# RF	6-5/8"	11"	18"	14-5/8"	7-5/16"	1/2" NPT	87	93	27	1
015-124	300 Psig @ 150°F	1-1/2" -300# RF	6-5/8"	11"	18"	14-5/8"	7-5/16"	1/2" NPT	93	99	27	1
020-124	300 Psig @ 150°F	2" -300# RF	6-5/8"	11"	18"	14-5/8"	7-5/16"	1/2" NPT	95	102	27	1
025-124	300 Psig @ 150°F	2-1/2" -300# RF	8-3/4"	15"	28"	19"	9-1/2"	1/2" NPT	225	254	81	2
030-124	300 Psig @ 150°F	3" -300# RF	8-3/4"	15"	28"	19"	10"	1/2" NPT	233	262	81	2
040-124	300 Psig @ 150°F	4" -300# RF	8-3/4"	15"	28"	20"	10"	1/2" NPT	252	282	81	2
060-124	300 Psig @ 150°F	6" -300# RF	10-1/2"	17"	32"	24"	12"	1" NPT	408	468	127	3
080-124	300 Psig @ 150°F	8" -300# RF	13-1/4"	22"	41"	28"	14"	1" NPT	610	720	184	5
100-124	300 Psig @ 150°F	10" -300# RF	17-1/2"	27"	49"	32"	16"	1" NPT	884	1104	224	7
120-124	300 Psig @ 150°F	12" -300# RF	19-1/4"	31"	57"	34"	17"	1-1/2" NPT	1085	1400	263	9
140-124	300 Psig @ 150°F	14" -300# RF	20-3/4"	33"	61"	38"	19"	1-1/2" NPT	1307	1732	305	11
160-124	300 Psig @ 150°F	16" -300# RF	23"	38"	67"	42"	21"	1-1/2" NPT	1715	2275	400	13
180-124	300 Psig @ 150°F	18" -300# RF	26"	41"	75"	46"	23"	2" NPT	2060	2810	456	16
200-124	300 Psig @ 150°F	20" -300# RF	30"	46"	86"	48"	24"	2" NPT	2550	2815	614	20
240-124	300 Psig @ 150°F	24" -300# RF	33-3/4"	50-3/8"	100"	54"	27"	2" NPT	3960	5985	1068	28

Note: Dimensions subject to change without notice, apply for certified drawings.
Custom designs are available, please consult the FE Sales Department or your local sales representative.



Series 124 Fabricated Simplex Basket Strainer



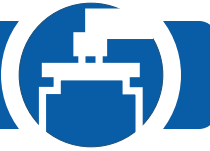
EXAMPLE OF A TYPICAL ORDER SPECIFICATION:

Simplex Strainer shall be size _____ Series 124 with flanged connections as manufactured by Fluid Engineering; Erie, PA.

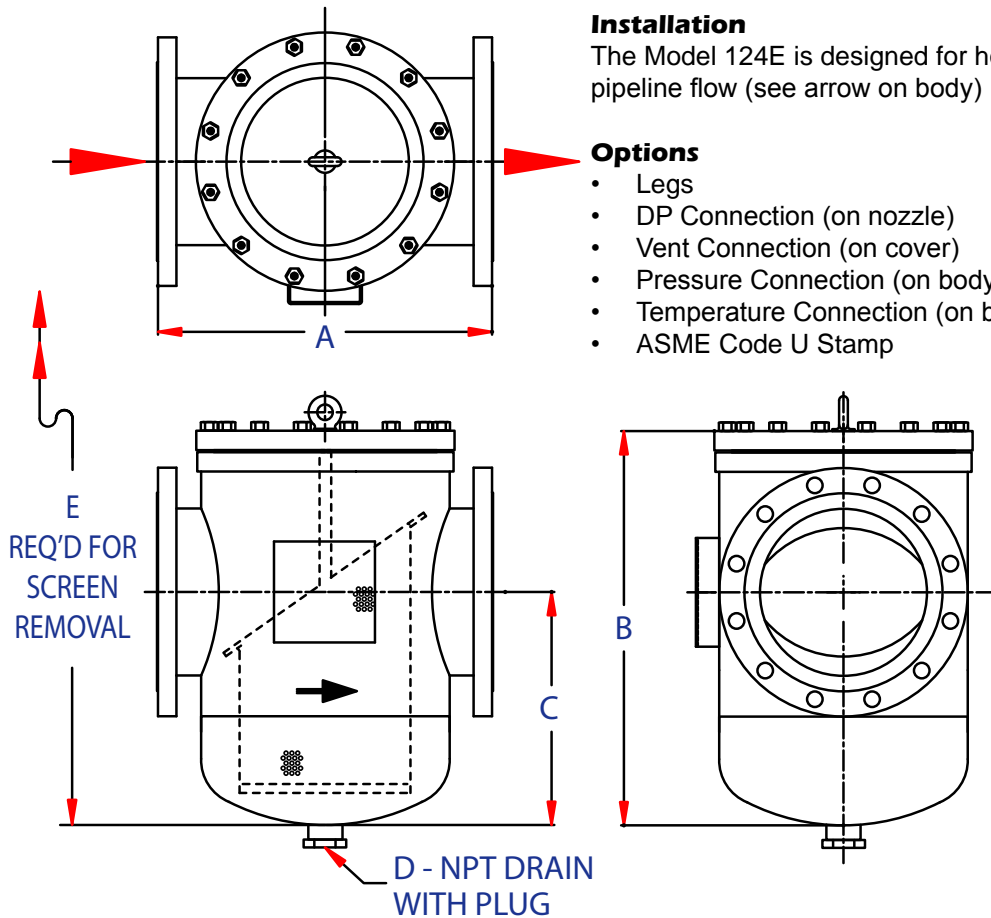
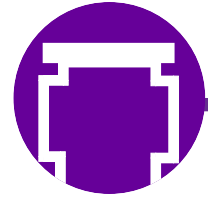
Strainer body shall be (Fabricated Carbon Steel) with bolted style cover closure. Strainer will be suitable for design pressures of (150) psig at (150°F). Baskets shall be (316 Stainless Steel) with 1/16" or 1/8" perforated openings.

Operating Capacity shall be _____ GPM at _____ psig pressure loss with clean baskets.

"Engineered Products for Demanding Applications, Performance, and Service"



Model 124E Bolted Closure Simplex Strainer



Installation

The Model 124E is designed for horizontal pipeline flow (see arrow on body)

Options

- Legs
- DP Connection (on nozzle)
- Vent Connection (on cover)
- Pressure Connection (on body)
- Temperature Connection (on body)
- ASME Code U Stamp

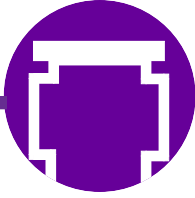
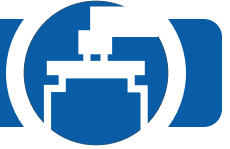
Size Connection	A	B	C	D	E	Weight
8" 203 mm	17 7/8" 441 mm	22 7/16" 570 mm	15 1/8" 384 mm	1 1/2" 38 mm	48" 1219 mm	234 lbs 106 kg
10" 254 mm	21 5/8" 549 mm	26 3/8" 670 mm	16" 406 mm	1 1/2" 38 mm	51" 1295 mm	400 lbs 181 kg
12" 305 mm	25" 635 mm	36 1/6" 918 mm	25" 635 mm	2" 51 mm	62" 1575 mm	692 lbs 314 kg
14" 356 mm	47 1/8" 1196 mm	54 5/8" 1386 mm	34 3/5" 874 mm	2" 51 mm	74" 1880 mm	1550 lbs 703 kg
16" 406 mm	47 1/8" 1196 mm	54 5/8" 1386 mm	34 3/5" 874 mm	2" 51 mm	74" 1880 mm	1600 lbs 726 kg

Note: Dimensions subject to change without notice, apply for certified drawings.
Custom designs are available, please consult the FE Sales Department or your local sales representative.

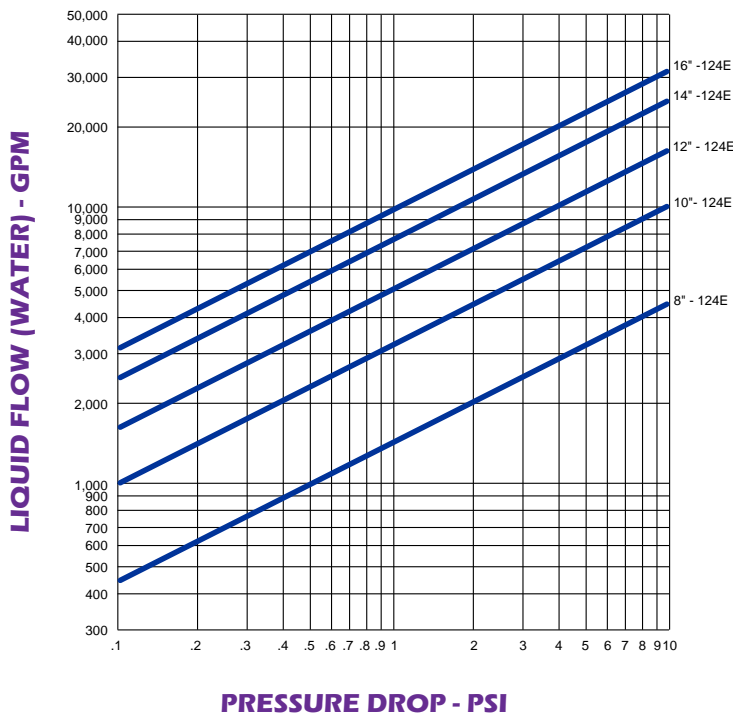
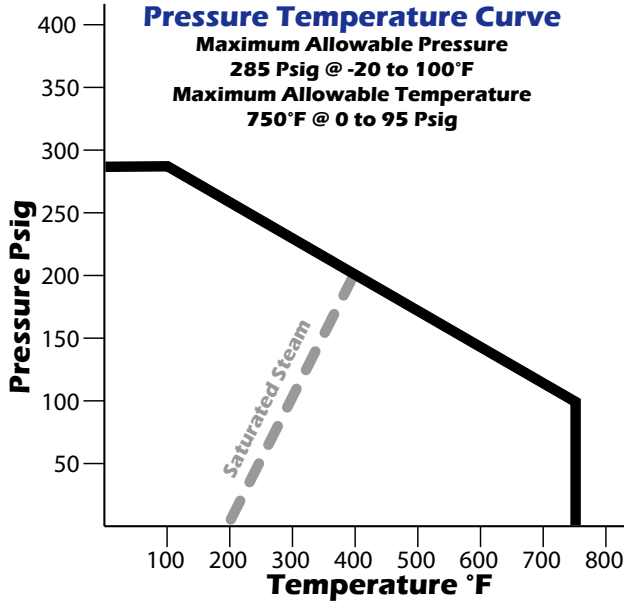
Straining Element

- Standard = 0.045" Perf
- Other perf and mesh on application

All units are designed in accordance per ASME Code Section VIII Div I with all welding in accordance with the requirements of ASME Code Section IX and certified.



Model 124E Bolted Closure Simplex Strainer



"Engineered Products for Demanding Applications, Performance, and Service"



SIMPLEX STRAINER WITH BACKWASH CONNECTIONS FABRICATED 224 SERIES

Standard Design:

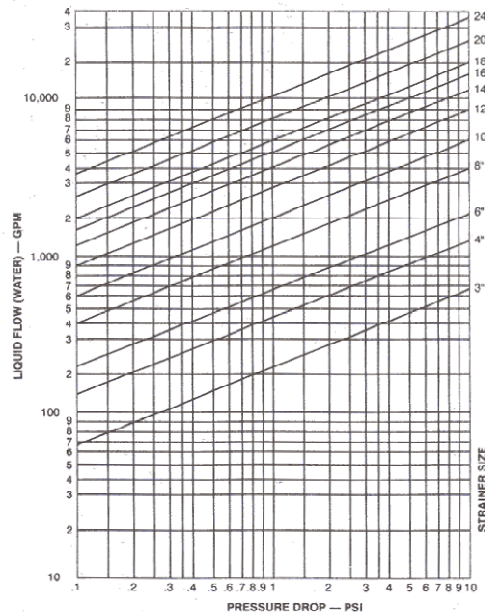
- Fabricated carbon steel body with bolted style cover
- Available in 1/16" or 1/8" perforations and 40 or 80 mesh – 316 stainless steel
- All vessels are manufactured and tested generally in accordance with ASME Code, Section VIII, Division 1, using welders certified to Section IX.
- All strainers are hydrostatically tested to 1 ½ times design pressure.
- 3" through 24" sizes

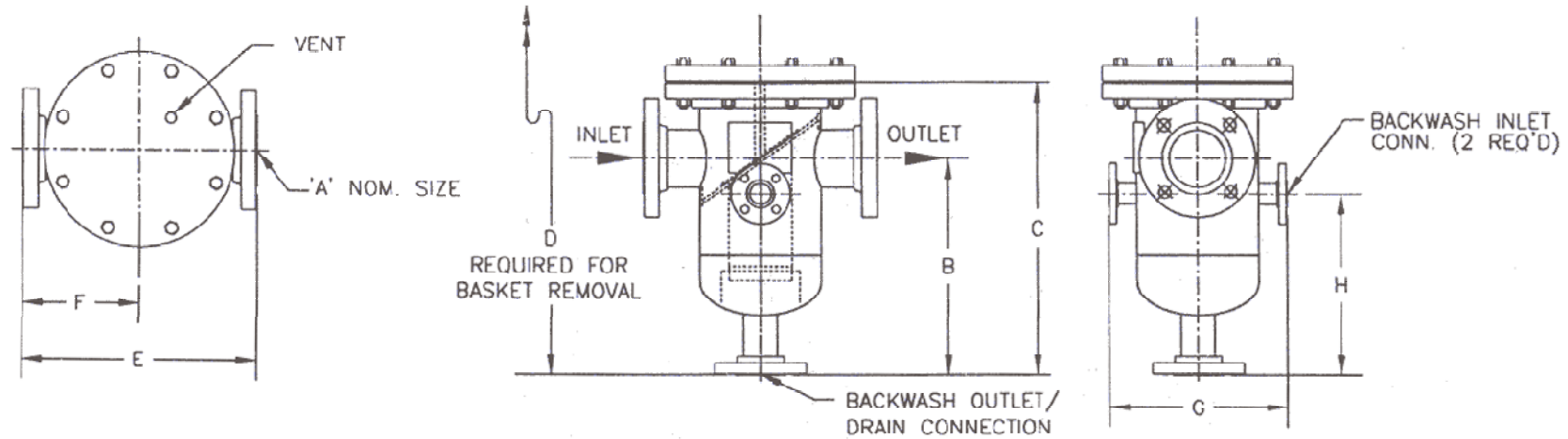
Standard Design Features:

- In line connections
- Compact, light weight fabricated vessels
- Angle basket design with a low pressure drop
- Large capacity basket
- Heavy duty basket design for a long life

Options Available:

- Basket materials of brass, monel, and others
- Mesh lined baskets – 20 x 20 to 400 x 400 mesh
- Numerous materials of construction such as stainless steel, copper nickel, monel, aluminum bronze, and others for corrosive environment
- ASME Section VIII, Code Stamp supplied with complete pressure vessel material traceability
- Vessel design for high pressure and temperature
- Inlet/outlet connections at right angles or offset configuration reduces piping cost.
- Pressure gauge taps – convenient indication of dirty baskets
- Cover lift assembly (davit) facilitates basket removal.
- Special internal and external coatings
- Legs, foot ring, or base available upon request.





MODEL NO.	A NOMINAL	B	C	D	E	F	G	H	BACKWASH OUTLET CONNECTIONS	BACKWASH INLET
030-224	3" 80 mm	11-3/4" 11.8 mm	17" 431.8 mm	30" 762.0 mm	16.6" 421.6 mm	8.3" 210.8 mm	11" 279.4 mm	9-3/4" 247.7 mm	1 1/2" NPT 40 mm	1" NPT 25 mm
040-224	4" 100 mm	11-3/4" 11.8 mm	17" 431.8 mm	30" 762.0 mm	16.6" 421.6 mm	8.3" 210.8 mm	11" 279.4 mm	9-3/4" 247.7 mm	1 1/2" NPT 40 mm	1" NPT 25 mm
060-224	6" 150 mm	14" 355.6 mm	20-1/4" 514.4 mm	35" 889.0 mm	21" 533.4 mm	10.5" 266.7 mm	14" 355.6 mm	11" 279.4 mm	2" NPT 50 mm	1 1/2" NPT 40 mm
080-224	8" 200 mm	17" 431.8 mm	24-1/2" 622.3 mm	43" 1092.2 mm	24" 609.6 mm	12" 304.8 mm	16" 406.4 mm	13" 330.2 mm	2" NPT 50 mm	1 1/2" NPT 40 mm
100-224	10" 250 mm	23-1/2" 596.9 mm	32-1/2" 825.5 mm	54" 1371.6 mm	28" 711.2 mm	14" 355.6 mm	19-1/2" 495.3 mm	18-1/2" 469.9 mm	3"-150# RF 50 mm	2" NPT 50 mm
120-224	12" 300 mm	26-1/2" 673.1 mm	36-3/4" 933.5 mm	63" 1600.2 mm	30" 762.0 mm	15" 381.0 mm	21-1/2" 546.1 mm	20-1/2" 520.7 mm	3"-150# RF 80 mm	2" NPT 50 mm
140-224	14" 350 mm	28" 711.2 mm	40" 1016.0 mm	68" 1727.2 mm	32" 812.8 mm	16" 406.4 mm	23-1/2" 596.9 mm	21-3/4" 552.5 mm	3"-150# RF 80 mm	2" NPT 50 mm
160-224	16" 400 mm	29" 736.6 mm	41-1/4" 1047.8 mm	71" 1803.4 mm	34" 863.6 mm	17" 431.8 mm	30" 762.0 mm	22-1/2" 571.5 mm	4"-150# RF 80 mm	2-1/2"-150# RF 65 mm
180-224	18" 450 mm	32" 812.8 mm	45-1/2" 1155.7 mm	80" 2032.0 mm	36" 914.4 mm	18" 457.2 mm	32" 812.8 mm	24-1/2" 622.3 mm	4"-150# RF 100 mm	2-1/2"-150# RF 65 mm
200-224	20" 500 mm	36" 914.4 mm	51" 1295.4 mm	90" 2286.0 mm	42" 1066.8 mm	21" 533.4 mm	42" 1066.8 mm	27" 685.8 mm	6"-150# RF 100 mm	3"-150# RF 80 mm
240-224	24" 600 mm	42-1/2" 1079.5 mm	57-1/2" 1460.5 mm	106" 2692.4 mm	50" 1270.0 mm	25" 635.0 mm	48" 1219.2 mm	32" 812.8 mm	6"-150# RF 150 mm	3"-150# RF 80 mm

**Dimensions subject to change without notice, apply for certified drawings.
Other sizes are available, please consult the factory or your local sales representative.**



SERIES 134 FABRICATED SIMPLEX BASKET STRAINER OFF-SET DESIGN BOLTED COVER

MAXIMUM OPERATING PRESSURE AND TEMPERATURE

2" through 24" - 150 psi @ 150°F
(Available in full ANSI Ratings)

STANDARD DESIGN

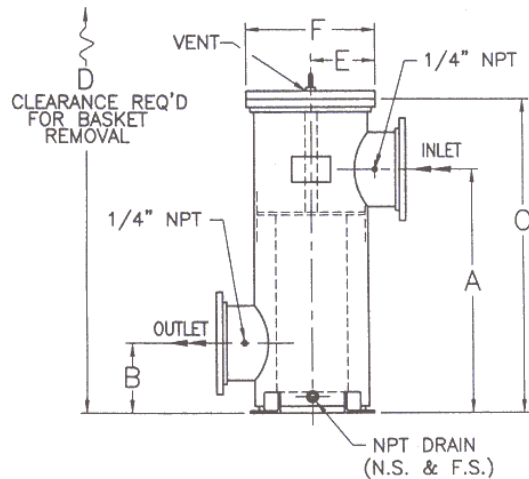
- Fabricated carbon steel with bolted style cover
- 304 stainless steel basket with perforated (1/32", 1/16", 1/8", or 5/32") openings
- All vessels are manufactured and tested generally in accordance with ASME Code, Section VIII, Division 1, using welders certified to Section IX.
- All strainers are hydrostatically tested to 1 ½ times design pressure.

STANDARD DESIGN FEATURES

- Compact, light weight fabricated vessels
- Flat basket design with a low pressure drop
- Extra-large capacity basket
- Heavy duty basket design for a long life

OPTIONS AVAILABLE

- Basket materials of 316 stainless steel, brass, monel, and others
- Mesh lined baskets - 20 x 20 mesh to 200 x 200 mesh
- Numerous materials of construction such as stainless steel, bronze, copper nickel, monel, and others for corrosive environments.
- ASME Section VIII, Code Stamp supplied with complete pressure vessel material traceability.
- Vessel design for high pressure and temperature
- Pressure gauge taps - convenient indication for dirty basket. Differential Pressure accessories also available.
- Cover lift assembly (davit) facilitates basket removal. Swing closure and swing bolt closure designs also available.
- Special internal and external coatings



1. Basket hold down is available on 10" and larger sizes only.
2. Vent is available on 6" and larger sizes only.
3. Closure, lifting eye is available on 6" and larger sizes only.

SIZE	A	B	C	D	E	F	VENT	DRAIN	C _v	WEIGHT
2" 50 mm	18-3/8" 466.7 mm	10-3/4" 273.1 mm	22-1/2" 571.5 mm	17" 431.8 mm	6" 152.4 mm	12" 304.8 mm	1/4" NPT 6 mm	1/2" NPT 15 mm	45 GPM 171 LPM	76 lbs. 34.5 kg.
3" 80 mm	21-3/8" 542.9 mm	10-3/4" 273.1 mm	27" 685.8 mm	26" 660.4 mm	8-1/4" 209.6 mm	16-1/2" 419.1 mm	1/4" NPT 6 mm	1/2" NPT 15 mm	175 GPM 665 LPM	168 lbs. 76.2 kg.
4" 100 mm	24-3/8" 619.1 mm	13" 330.2 mm	31-1/2" 800.1 mm	30" 762.0 mm	8-1/4" 209.6 mm	16-1/2" 419.1 mm	1/4" NPT 6 mm	1/2" NPT 15 mm	275 GPM 1045 LPM	185 lbs. 83.9 kg.
6" 150 mm	27" 685.8 mm	14" 355.6 mm	34" 863.6 mm	33" 838.2 mm	10-1/2" 266.7 mm	21" 533.4 mm	1/4" NPT 6 mm	1/2" NPT 15 mm	600 GPM 2280 LPM	270 lbs. 122.5 kg.
8" 200 mm	31-3/8" 796.9 mm	16" 406.4 mm	39-1/2" 1003.3 mm	38" 965.2 mm	12" 304.8 mm	24" 609.6 mm	1/4" NPT 6 mm	1/2" NPT 15 mm	1300 GPM 4940 LPM	400 lbs. 181.4 kg.
10" 250 mm	34-7/8" 885.8 mm	18" 457.2 mm	45-1/4" 1149.4 mm	38" 965.2 mm	14" 355.6 mm	28" 711.2 mm	1/4" NPT 6 mm	1-1/2" NPT 40 mm	1900 GPM 7220 LPM	725 lbs. 328.9 kg.
12" 300 mm	40" 1016.0 mm	24" 609.6 mm	50-1/4" 1276.4 mm	38" 965.2 mm	15" 381.0 mm	30" 762.0 mm	1/4" NPT 6 mm	1-1/2" NPT 40 mm	2900 GPM 11020 LPM	935 lbs. 424.1 kg.
14" 350 mm	45-1/4" 1149.4 mm	26" 660.4 mm	57-1/4" 1454.2 mm	39" 990.6 mm	16" 406.4 mm	32" 812.8 mm	1/4" NPT 6 mm	1-1/2" NPT 40 mm	3500 GPM 13300 LPM	1150 lbs. 521.6 kg.
16" 400 mm	51-1/2" 1308.1 mm	32" 812.8 mm	65-1/2" 1663.7 mm	43" 1092.2 mm	17" 431.8 mm	34" 863.6 mm	1/4" NPT 6 mm	1-1/2" NPT 40 mm	4800 GPM 18240 LPM	1500 lbs. 680.4 kg.
18" 450 mm	56-1/2" 1435.1 mm	34" 863.6 mm	71-1/2" 1816.1 mm	47" 1193.8 mm	18" 457.2 mm	36" 914.4 mm	1/4" NPT 6 mm	1-1/2" NPT 40 mm	6200 GPM 23560 LPM	1850 lbs. 839.2 kg.
20" 500 mm	61-1/2" 1562.1 mm	38" 965.2 mm	77-1/2" 1968.5 mm	51" 1295.4 mm	21" 533.4 mm	42" 1066.8 mm	1/4" NPT 6 mm	2" NPT 50 mm	7600 GPM 28880 LPM	2210 lbs. 1002.5 kg.
24" 600 mm	68-1/2" 1739.9 mm	40" 1016.0 mm	87-1/2" 2222.5 mm	57" 1447.8 mm	25" 635.0 mm	50" 1270.0 mm	1/4" NPT 6 mm	2" NPT 50 mm	11000 GPM 41800 LPM	3535 lbs. 1603.5 kg.

Dimensions are subject to change without notice, apply for certified drawings.



Model 300 Simplex Strainer

Start-up strainers, like tee and cone strainers, are typically designed with very little debris holding capacity. They will have a higher differential pressure than a basket strainer. Cleaning these are also a major issue. Cone strainers have a pipe spool to remove. When removing the basket in a tee strainer, the debris has a tendency to fall out of the basket into the bottom of the strainer housing. Sometimes the debris passes downstream and causes damage to the device that is being protected. FE has a research project to redesign a basket that will hold the debris.



The main application for a “Y” strainer is gas and steam where cleaning is infrequent. “Y” strainers must be installed with a basket hanging so that the blow-off valve is near the ground. The screen in a “Y” strainer is removed from the bottom of the strainer. This is not a major problem with small “Y” strainers (under 6”, (152.4 mm)). However, on larger strainers the cover can weigh over 100 pounds (45 kg) and are not easily removed. Lastly, the open area ratio on most “Y” strainers is less than 2 to 1, therefore there is no debris holding capacity.

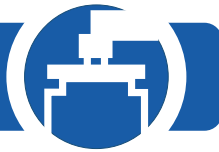
The major problem with a simplex strainer is that the system needs to be shut down in order to clean the basket. Therefore, simplex strainers piped in a duplex arrangement have become a preferred style. Simplex and duplex strainers are more attractive because they are installed in an upright position and the basket is lifted from the top. When the basket is filled with debris, it may be heavy and can only be removed in the vertical position. Simplex and duplex strainers can only be installed in a horizontal pipeline.

None of the designs mentioned above can be used in a vertical pipe run. Over the last six months, Fluid Engineering has been reviewing the problems found in vertical piping. Vertical piping arrangements are mostly found in petrochemical and chemical processing systems. As of April 2003, Fluid Engineering started offering a new type of simplex strainer with a tubular type basket design. The 300 series strainer (Models 300, 301, 302, and 303) are designed for various installation positions such as: vertical-up, vertical-down, or as an elbow. See the above photo showing the easy cleaning of the 300 series.

The Model 300VD through 303 VD (designed for vertical-down) is a design where the flow is from outside the of the perforated basket with a manual blow down. The flow, as it washes over the basket, will force the debris to the bottom of the strainer housing, which has a built in sump. This flow patten has been designed to act as a self-washing (self-cleaning) simplex strainer.

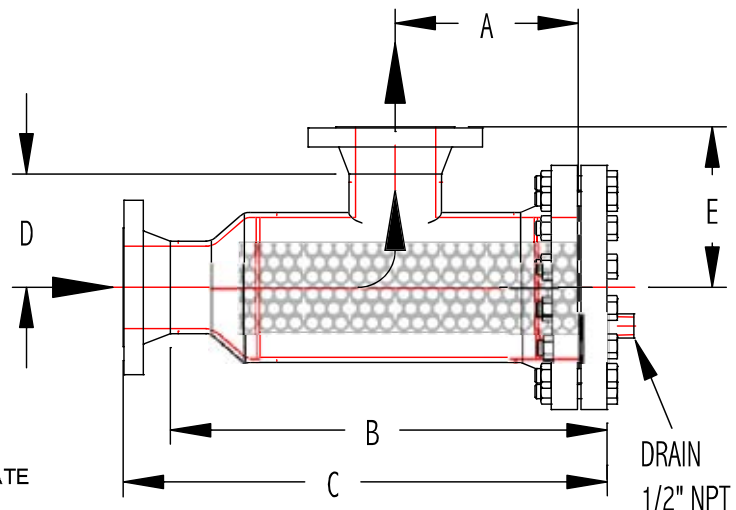


Adding straightening vanes (SV) to any of the Models 300VD (also Models 301-303) creates a flow diffuser. This diffuser can eliminate up to 95 percent of the normal turbulence found after any elbow in a piping system. The turbulence will shorten the normal operating life of valves (mainly check valves), pumps, and flow measuring equipment. Using a Model 300 strainer in place of an elbow will eliminate 100 percent of elbow erosion. Erosion is the cause of most pipeline failures. This lessons downtime and repair costs

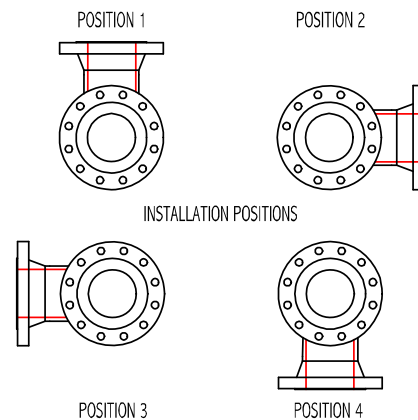
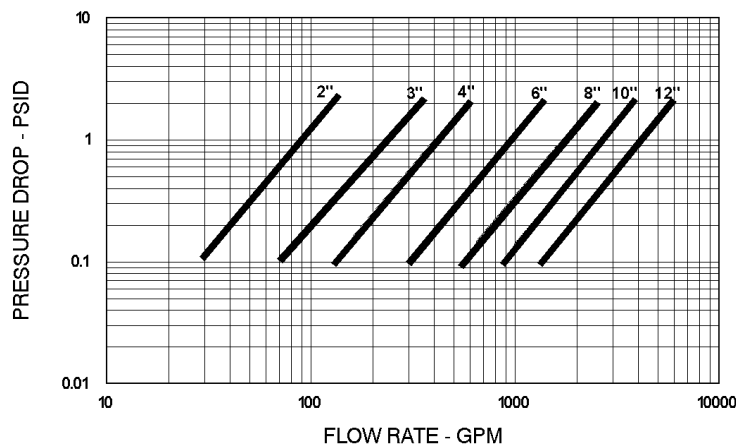


Model 300
90° Elbow Simplex

- **300** Inlet & Outlet Butt weld
- **301** Inlet Butt weld & Outlet Flanged
- **302** Inlet Flanged & Outlet Butt weld
- **303** Inlet & Outlet Flanged

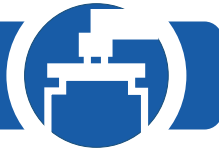


PRESSURE DROP vs. FLOWRATE



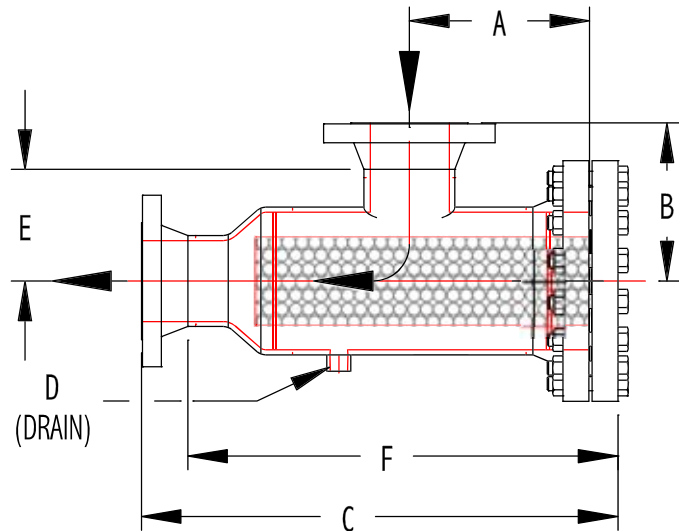
		ANSI 150#					ANSI 300#				
Size	Inlet /Outlet	A	B	C	D	E	A	B	C	D	E
2"	2"	5"	7 1/2"	10"	2 1/2"	5"	5 1/4"	7 3/4"	10 1/2"	2 1/2"	5 1/4"
50.8 mm	50.8 mm	127 mm	190.5 mm	254.0 mm	63.5 mm	127 mm	133.4 mm	196.9 mm	266.7 mm	63.5 mm	133.4 mm
3"	3"	6 1/8"	9 1/2"	12.3"	3 3/8"	6 5/8"	6 1/2"	9 7/8"	13"	3 3/8"	6 1/8"
76.2 mm	76.2 mm	155.6 mm	241.3 mm	311.2 mm	85.7 mm	168.3 mm	165.1 mm	250.8 mm	330.2 mm	85.7 mm	155.6 mm
4"	4"	7 1/8"	11 1/8"	14 1/4"	4 1/8"	7 1/8"	7 1/2"	11 5/8"	15"	4 1/8"	7 1/2"
101.6 mm	101.6 mm	181.0 mm	282.6 mm	360.0 mm	104.8 mm	181.0 mm	190.5 mm	295.3 mm	381.0 mm	104.8 mm	190.5 mm
6"	6"	9 1/8"	14 3/4"	18 1/4"	5 5/8"	9 1/8"	9 1/2"	15 1/8"	19"	5 5/8"	9 1/2"
152.4 mm	152.4 mm	231.8 mm	374.7 mm	463.6 mm	142.9 mm	231.8 mm	241.3 mm	384.2 mm	482.6 mm	142.9 mm	241.3 mm
8"	8"	11"	18"	22"	7"	11"	11 3/8"	18 1/8"	22 3/4"	7"	11 3/8"
203.2 mm	203.2 mm	279.4 mm	457.2 mm	558.8 mm	177.8 mm	279.4 mm	288.9 mm	466.7 mm	577.9 mm	177.8 mm	288.9 mm
10"	10"	12 1/2"	21"	25"	8 1/2"	12 1/2"	13 1/8"	21 5/8"	26 1/4"	8 1/2"	13 1/8"
254.0 mm	254.0 mm	317.5 mm	533.4 mm	635 mm	215.9 mm	317.5 mm	333.4 mm	549.3 mm	666.8 mm	215.9 mm	333.4 mm
12"	12"	14 1/2"	24 1/2"	29"	10"	14 1/8"	15 1/8"	25 1/8"	30 1/4"	10"	15 1/8"
304.8 mm	304.8 mm	368.3 mm	622.3 mm	736.6 mm	254.0 mm	368.3 mm	384.2 mm	638.2 mm	768.4 mm	254.0 mm	384.2 mm

- Larger sizes, higher pressures, and temperatures are available on application
- Models 6" and greater will be supplied with pipe support (Contractor to add ground support)
- Models 8" and greater will be supplied with cover davit swing
- Dimensions subject to change without notice, apply for certified drawings

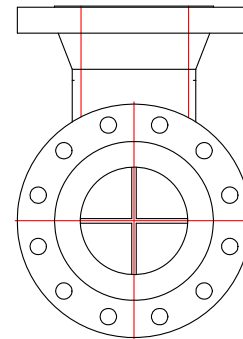
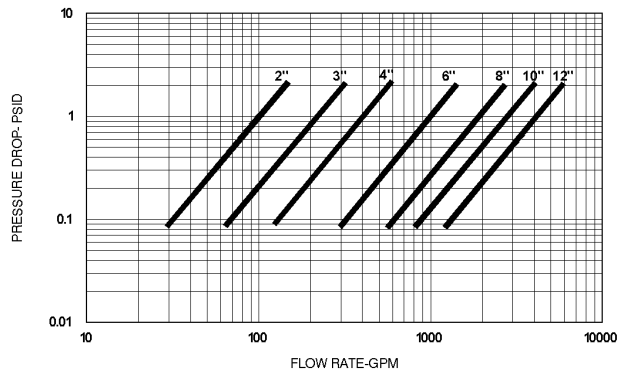


Model 300 Vertical Down Self-Cleaning Simplex with Straightening Vanes Option

- 300VD/VDSV Inlet & Outlet Butt weld
- 301VD/VDSV Inlet Butt weld & Outlet Flanged
- 302VD/VDSV Inlet Flanged & Outlet Butt weld
- 303VD/VDSV Inlet & Outlet Flange



PRERESSURE DROP vs. FLOW RATE



Size	Inlet /Outlet	ANSI 150#						ANSI 300#					
		A	B	C	D	E	F	A	B	C	D	E	F
2" 50.8 mm	2" 50.8 mm	6 1/8" 155.6 mm	5 3/4" 146.1 mm	15 1/2" 393.7 mm	1/2" 12.7 mm	3 1/4" 82.6 mm	13" 330.2 mm	6 1/2" 165.1 mm	6" 152.4 mm	15 3/4" 400.1 mm	1/2" 12.7 mm	3 1/4" 82.6 mm	13 3/8" 339.7 mm
3" 76.2 mm	3" 76.2 mm	6 1/4" 171.5 mm	6 5/8" 168.3 mm	17 5/8" 447.7 mm	1/2" 12.7 mm	3 7/8" 98.4 mm	14 7/8" 377.8 mm	7 1/8" 181.0 mm	6 1/8" 168.3 mm	18" 457.2 mm	1/4" 6.4 mm	3 7/8" 98.4 mm	15 1/4" 387.4 mm
4" 101.6 mm	4" 101.6 mm	9 1/8" 231.8 mm	8 1/8" 206.4 mm	23 1/4" 590.6 mm	3/4" 19.1 mm	5 1/8" 130.2 mm	20 1/4" 514.4 mm	9 3/4" 247.7 mm	8 1/2" 215.9 mm	23 5/8" 600.1 mm	3/4" 19.05 mm	5 1/8" 130.2 mm	20 5/8" 523.9 mm
6" 152.4 mm	6" 152.4 mm	12 1/2" 317.5 mm	11 1/8" 282.6 mm	31 1/2" 800.1 mm	1" 25.4 mm	7 5/8" 193.7 mm	28" 711.2 mm	13 1/8" 333.4 mm	11 1/2" 292.1 mm	31 7/8" 809.6 mm	1" 25.4 mm	7 5/8" 193.7 mm	28 5/8" 727.1 mm
8" 203.2 mm	8" 203.2 mm	14 1/2" 368.3 mm	13" 330.2 mm	36 1/2" 927.1 mm	1 1/2" 38.1 mm	9" 228.6 mm	32 1/4" 819.2 mm	15 7/8" 403.2 mm	13 3/8" 339.7 mm	36 5/8" 930.3 mm	1 1/2" 38.1 mm	9" 228.6 mm	32 7/8" 835.1 mm
10" 254 mm	10" 254 mm	16" 406.4 mm	14 1/8" 358.8 mm	44" 1118 mm	1 1/2" 38.1 mm	10 1/8" 257.2 mm	40" 1016 mm	16 5/8" 422.3 mm	14 3/4" 374.7 mm	44 5/8" 1133 mm	1 1/2" 38.1 mm	10 1/8" 257.2 mm	40 5/8" 1032 mm
12" 304.8 mm	12" 304.8 mm	17" 431.8 mm	16 1/8" 409.6 mm	47 1/2" 1207 mm	2" 50.8 mm	11 5/8" 295.3 mm	43" 1092 mm	17 3/4" 450.9 mm	16 2/4" 425.5 mm	48 1/8" 1222 mm	2" 50.8 mm	11 5/8" 295.3 mm	43 3/4" 1111 mm

- Larger sizes, higher pressures, and temperatures are available on application
- Models 6" and greater will be supplied with pipe support (Contractor to add ground support)
- Models 8" and greater will be supplied with cover davit swing
- Dimensions subject to change without notice, apply for certified drawings