



Series 9000

9000 Keeper Software

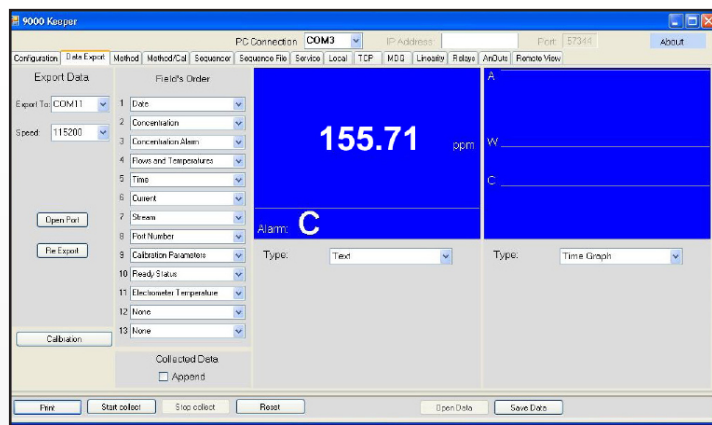


Software

The Baseline® 9000 Keeper software is used with an external computer connection to Series 9000 Hydrocarbon analyzers. The software provides total control of the instrument's set-up for alarms, relays, calibration, temperature, flows, configuration, data export, and real-time data viewing.

Different set-ups can be stored as methods on a PC which can easily be loaded into the instrument for quick parameter changes on different applications. The computer can be connected directly to the analyzer with either a RS-232 or Ethernet connection. When the instrument is connected to a network it can be accessed using 9000 Keeper on a computer with a network connection.

The 9000 Keeper software can store parameters on a PC or export user selected data to either a text file or a terminal emulator. Examples of the data include but are not limited to: date, time, concentration, calibration parameters, flows, temperatures, and alarms



Features

- View or configure the Series 9000 Analyzer from a computer locally or over a network
- Easily switches analyzer between different method configurations to run different applications as needed
- Store parameters within the program on a PC or export specific data to a text file or terminal emulator

System Requirements

Operating System Requirements: Windows® XP / Vista / 7

Required Processor: Pentium 4 or equivalent/ greater

Required RAM: 512MB

Recommended RAM: 2GB

